

Arles Image Web Page Creator 8
Arles Image Explorer 8

User Manual

Table of Contents

Part I About	1
Part II Getting Started Creating a Image Web Page Gallery	1
Part III Order	2
Part IV Arles Image Explorer	3
1 Viewing Images	3
2 Rotate Images	4
3 Sorting Images	5
4 Selecting Images	5
5 Editing Image Information	5
6 Editing Folder Information	6
7 Drag and Drop Images	7
8 Folder Bookmarks	8
9 Rename Files	9
10 Email Images	10
11 Viewing EXIF Info	10
12 Editing Image IPTC Info	11
13 Editing JPEG Comment	13
14 Data Mover	14
15 Movies	14
Playing Movies	14
Select Movie Poster Frame	15
16 Image Explorer Options	16
Image Explorer	16
Interface	17
IPTC/EXIF	17
Images	18
Email	19
17 Images Database	20
Cleaning the database	21
Backing up the database	21
Restoring a database	22
Checking and repairing the database	22
Export to text file	22
Import from text file	23
Changing the database location	24

18 Keyboard Shortcuts	24
Image Explorer	24
Image Viewer	26
IPTC Window	27
Jpeg Comment Window	28
 Part V Arles Image Web Page Creator	 28
1 Files Tab	29
Advanced Files Options	30
FileNames	30
Folder	31
User Files	33
2 Thumbnails Tab	34
Advanced Thumbnail Options	34
Crop to fit	36
3 Images Tab	36
Advanced Image Options	37
4 Index Page Tab	38
Gallery Style Options	39
Navigation Options	40
HTML Design Options	43
RSS Feed Options	44
Advanced Index Page Options	45
General	45
Table	46
Borders	47
Thumbnail	48
Thumbnail Links	48
Popups	49
Other	50
5 Image Pages Tab	51
Slideshow Options	51
Advanced Image Pages Options	52
General Tab	52
Image Links Tab	53
Movies Tab	54
Effects	54
Other Tab	55
6 Titles Tab	55
Advanced Title Options	56
Font and Style Options	57
Image Title Tags	58
Folder Title Tags	58
7 Publish Files	59
Publish Location	61
Publish Options	62
8 Image Effects	63
Text labels	64
Logos	65
Borders	66

Image Overlays	67
Masks	68
9 HTML templates	68
Simple HTML Templates	69
Advanced HTML Templates	69
HTML Template Tags	70
Simple HTML Template Example	75
10 Options	75
General	76
HTML	76
File locations	77
Confirmations	78
Browsers	78
Other	79
11 Other	80
Internet Explorer Security Warning	80
JPEG or PNG?	80
Image Resize Methods	81
Image Filters	81
Style Files	82
Command Line Run Options	83
Command Line Processing	83
12 Multi-folder Processing	85
 Part VI FAQ	 87
1 How to add titles to my images?	87
2 How to create galleries of web pages?	87
3 How to create multi-folder galleries?	87
4 How to create a gallery with movies?	87
5 Copy or move my images files without losing image titles?	88
6 Remove the "Generated With Arles Image Web Page Creator" links?	88
 Index	 90

1 About

With Arles you can quickly and easily create image galleries on the web. Arles creates [high quality](#) thumbnail images, modifies your images and generates HTML pages. The fully featured [Arles Image Explorer](#) is included.

[Arles Image Explorer](#)

Organize your images and movies.

[Arles Image Web Page Creator](#)

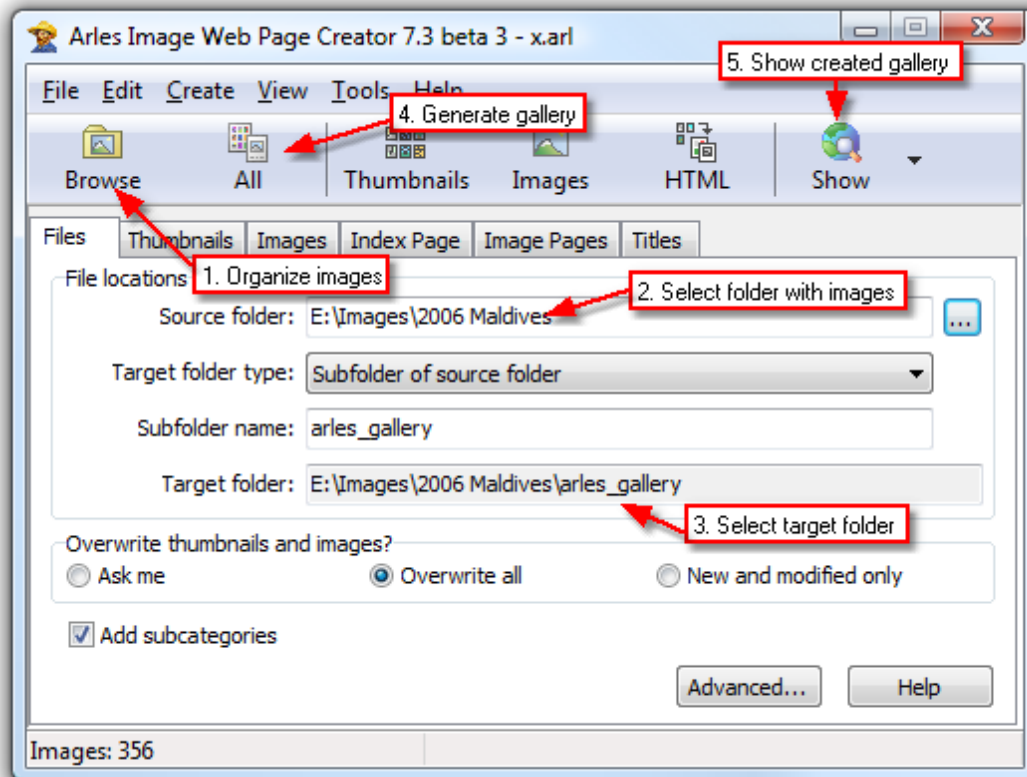
Create image web page galleries.

[Getting started creating web image galleries](#)

Getting started tutorial on how to create an image web page gallery.

2 Getting Started Creating a Image Web Page Gallery

If you started up with the [Arles Image Explorer](#), click the **Web Pages** button on the toolbar to open the [Arles Web Page Creator window](#).



Create a gallery

1. Organize your images

Click the **Browse** button to view, sort and select images in the [Arles Image Explorer](#)³¹.

2. Select folder with images

Select the **Source folder** where the images are stored for which you want to create a gallery (eg C:\Images\Holiday).

3. Select target folder

Select the **Target folder** where you want Arles to save the generated gallery files.

4. Generate gallery

Click the **All** button on the toolbar to generate the gallery.

5. Show gallery

Click the **Show** button on the toolbar to show the generated gallery in your browser.

Customize your gallery

To customize the layout of your gallery, just try any option and click the **All** and **Show** buttons again. To get help, press **F1** or click the **Help** button in any window.

For example, to change increase the size of the thumbnails to 120x120:

1. In the main window select the [thumbnails tab](#)³⁴.
2. Set the **Width** and **Height** to 120.
3. Recreate your gallery by clicking the **All** button.
4. Click the **Show** button to view the gallery.

Publish the gallery to your web server

If you are satisfied with the results, [upload the gallery](#)³⁹ to your web server.

3 Order

Direct order link

<http://www.digitaldutch.com/arles/order.htm>

Website

<http://www.digitaldutch.com>

Support

[Arles online support forum](#)

Email

info@digitaldutch.com

4 Arles Image Explorer

The *Arles Image Explorer* is a full featured image manager. You can view, sort and rename images. Or you can provide titles for all your images. If you started with the [Arles Image Web Page Creator](#)^[28], click the **Browse** button to open the Image Explorer.

[Viewing images](#)^[3]

View images in the thumbnail viewer or full screen.

[Rotate images](#)^[4]

Rotate images quickly without modifying them.

[Sorting images](#)^[5]

Sort the images in the order you want them.

[Selecting images](#)^[5]

Select images to include in your galleries.

[Editing image information](#)^[5]

Add titles to all your images.

[Editing folder information](#)^[6]

Set folder options.

[Drag and drop images](#)^[7]

Sort your images with the mouse.

[Folder Bookmarks](#)^[8]

Create and use folder bookmarks.

[Rename files](#)^[9]

Rename your image files.

[Email images](#)^[10]

Email images to your friends and family.

[Movies](#)^[14]

Viewing movies and selecting a movie poster frame.

[View image EXIF information](#)^[10]

View information added to the images by your digital camera.

[View and edit IPTC image information](#)^[11]

Store titles, keywords and other information in your image files.

4.1 Viewing Images

Select any folder in the treeview on the left to view its images.

Layouts

You can view images in the **Grid** or **Thumbnail** layout. Click the **Layout** button on the toolbar to switch between the two views. For folders with many images on when you are on a slower computer, you may want to use the grid view. The size of the thumbnails can be changed by selecting the **View** menu > **Thumbnail Size**.

Image viewer

To view images in the image viewer, click the **Viewer** button in the toolbar or double click the image.

4.2 Rotate Images

To rotate images:

1. Select the images you want to rotate in the [Arles Image Explorer](#)³.
2. Click the **Rotate** button in the toolbar or select the **Image** menu > **Rotate > Right**.

How image rotation works

Arles Image Web Page Creator does **not** modify your image files like most other image editing applications do. Those other applications rotate the image and then resave it, which often results in image quality degradation.

Arles leaves the image unchanged and instead remembers how much each image must be rotated, thus making sure the image quality is 100% maintained.

Another advantage of this method is that rotating images in Arles is lightning fast. You can rotate multiple images at the same time by selecting them and clicking the Rotate button.

Arles' rotation method makes viewing and processing images a little bit slower, because the images have to be rotated on the fly. If you don't want to take advantage of the Arles rotation feature, just rotate the original image in your favorite image editing application instead.

Tip

Use **Reset** from the **Rotate** menu to show the image again in it's original position.

EXIF rotation

Many digital cameras add the orientation at which is picture is taken to [EXIF information](#)¹⁰ that is embedded in the photo. Arles automatically rotates images to the upright position on basis of this information.

Sometimes the EXIF position field is not set correctly. This may happen with images from older digital cameras that do not have a position sensor. And sometimes other applications rotate images without updating the info in the EXIF position field.

Arles can automatically fix the EXIF position field in these images. When you rotate images that contains a EXIF position field, Arles will ask you if you want the EXIF information to be updated. If you

select Yes, one byte in the EXIF segment of the photo file will be changed. The image quality is fully maintained.

You can set the EXIF options in the [Image Explorer Options window](#)^[16].

4.3 Sorting Images

Sort images

By default all images are sorted by name. To change the sort type select the **View** menu > **Arrange Images > by Size**. In the [grid view](#)^[3] you also can click on column headings to sort on the column. Click twice to sort in reverse order.

Custom sorting

Drag and drop images with your mouse to sort them in a custom order. All sorting information will be automatically stored in the [Images Database](#)^[20].

4.4 Selecting Images

Check the image checkbox to include or exclude images for the galleries. You can select multiple images by holding the Ctrl or Shift keys.

4.5 Editing Image Information

Edit image titles

To add a title to an image:

1. In the [Arles Image Explorer](#)^[3] select any image.
2. Enter your title in the **Title 1** field on the Image Info panel. If the Image Info panel is not visible, click the **Image Info** button in the toolbar.

You can use the Alt+Left and Alt+Right keys to browse through all images without taking your hands of the keyboard ([More shortcuts](#)^[24]).

Insert title tags

[Title tags](#)^[56] are usually used in the Advanced Title Options window, but you can also use them in the Arles Image Explorer title fields.

To add a title tag:

1. In the Image Explorer make sure the Image Information panel is visible. Click the **Image Info** button in the toolbar if it is hidden.

2. Right click in the **Title 1** field.
3. From the popup menu select **Insert > File name**.

Add image titles to a gallery

Titles defined in the Arles Image Explorer can be used in your image galleries by selecting Title1 or Title2 on the [Titles tab](#)^[55] in the main window.

To use the Title 1 field as thumbnail title:

1. In the main window select the **Titles** tab.
2. Set the **Thumbnail title** to **Image title 1**.
3. Recreate your gallery by clicking the **All** or **HTML** button in the main window.

To use the Title 1 in any other title:

1. In the main window select the **Titles** tab.
2. Click the **Advanced** button.
3. In the Advanced Title Options window select a title (eg **Image title**).
4. From the Tags section select **File title 1**.
5. Recreate your gallery by clicking the **All** or **HTML** button in the main window.

Image link

The image link field can be used to add an Internet link. You can set custom links for thumbnails and images on the [Advanced Index Page Options](#)^[45] and [Advanced Image Pages Options](#)^[52] windows.

4.6 Editing Folder Information

You can edit folder information on the Folder Info panel. If the Folder Info panel is not visible, click the **Folder Info** button in the toolbar.

Sort folder

To sort the subfolders select a sorting type from the **Sort** drop down box. You can also [sort folders manually](#)^[5] by dragging with your mouse.

Edit folder title

To add a folder title:

1. In the [Arles Image Explorer](#)^[3] select any folder in the treeview on the left.
2. If the Folder Info panel is not visible, click the **Folder Info** button in the toolbar.
3. Enter your title in the **Folder title** field on the Folder Info panel.

Select a default image for multi-folder processing

[Multi-folder processing](#)^[86] allows you to create galleries with sub-folders. For the subfolder thumbnail Arles selects by default the first image from that folder. You can use any image instead by selecting it as **Default Image**. It does not even have to be in the folder you are working on.

Select a custom style for multi-folder processing

When [multi-folder processing](#)^[86] all folder are generated with the default style. To select a custom style for a folder, select a Arles *.alo style file or standard *.arl file in the **Custom Style** box.

Note

You can use the Alt+Ctrl+Up, Alt+Ctrl+Down, Alt+Ctrl+Left and Alt+Ctrl+Right keys to browse through all folders without taking your hands of the keyboard ([More shortcuts](#)^[24]).

4.7 Drag and Drop Images

Drag and drop can be used to [sort](#)^[5], copy or move images. You can also drag images to any other application that supports file drags.

To move or copy images

1. Select a folder in the Arles Image Explorer.
2. Select all images you want to copy.
3. Drag them to another folder in the treeview on the left.

Hold the **Control** key while dragging to always copy the dragged images. Hold the **Shift** key while dragging to always move images. Image title information will be lost if you move or copy images in the Windows File Explorer. To keep image information copy/move your images within the Arles Image Explorer.

Drag to another application

You can drag and drop (or copy and paste) images directly to and from the Windows Explorer or any other application accepting file drags.

1. In the Arles Image Explorer select the images you want to drag.
2. With your mouse left click the images and drag them to another application, like Photoshop.

Drag and drop browser links into Arles

Arles can show images and even [create galleries of webpages](#)^[87] and even Internet addresses (URLs). To create a folder with Internet links:

1. Open the [Arles Image Explorer](#)^[3] and select a folder where you want to store web links (URLs).
2. Drag and Drop any URL from your web browser into Arles. You can do this by dragging the icon in the web browser address bar or by dragging any link in your browser to the Arles Image Explorer.
3. If you are connected to the Internet, Arles will automatically download the web page and create an

- thumbnail.
4. The link field in the Arles Image Explorer Image Info panel will automatically be set to the link.

4.8 Folder Bookmarks

Arles allows you to create bookmarks for folders that you often access. Folder bookmarks work just like browser bookmarks. Clicking it opens the folder without having to search for it in the folder treeview.

Show/Hide the bookmark panel

To show or hide the Folder Bookmarks panel select the **View** menu > **Panels** > **Folder Bookmarks**. You can also use the **Ctrl+B** [keyboard shortcut](#)^[24].

Bookmark actions

Create a bookmark

To create a bookmark, select the folder and then click the Add button on the Folder Bookmarks panel header or you can select the **File** menu > **Bookmark Current Folder**. But you can also use the **Ctrl+D** keyboard shortcut.

Delete a bookmark

To delete a bookmark, select it and click the Delete key. Alternatively right click the bookmark and select Delete from the popup menu.

Rename a bookmark

To rename a bookmark right click it and select **Rename** from the popup menu or use the **F2** keyboard shortcut.

Sort bookmarks

To sort the current bookmarks level right click a bookmark and select **Sort Level by Name**.

Move bookmarks

To move a bookmark drag and drop it with your mouse to a new location.

Categories

Arles allows you to create unlimited bookmark categories with as many sublevels as you like.

Create a category

To create a new category right click the bookmark panel and select **New Category**.

You can delete, rename and move categories in the same way as bookmarks.

4.9 Rename Files

Rename a single file

To rename a single file:

1. Select the file in the Arles Image Explorer.
2. Select the **File** menu > **Rename** or select **Rename** from the right click menu.
3. Type the new name and click Return.

Rename multiple files

To rename multiple files:

1. Select the **Tools** menu > **Rename Files**.
2. In the Rename Files window, select the **Simple** tab.
3. Type a new name. The example area will show the new file names.
4. Click **OK**.

Advanced options

The **Advanced** tab allows you to:

- Use special tags, like EXIF fields or the file modification date, in the filenames.
- Replace or delete text in the filenames.
- Convert filenames to lower or title case.

Using file name tags

Filename tags allow you to insert special file information, like EXIF fields or the file modification date, in the new filename. Click the **Insert Tag** button to insert a filename tag.

Tag name	Description
Filename	File name without extension.
Extension	File extension (eg "JPG")
Folder name	Folder name
File date	File modified date/time
Counter	Counter with automatic amount of leading zeros.
Counter (Advanced)	Counter that allows you specify the start value and the number of leading zeros.
Today's date	Today's date
Arles Title 1	Arles Title 1 field as shown in the Arles Image Explorer.
Arles Title 2	Arles Title 2 field as shown in the Arles Image Explorer.
Arles Link	Arles Link field as shown in the Arles Image Explorer.
EXIF	EXIF field. Select a field from the EXIF field selection window.
IPTC	IPTC field. Select a field from the IPTC field selection window.
JPEG Comment	JPEG comment

Date and time format

If you select a date or time field, like the File date or the EXIF DateTime, the date/time formatting window will be shown. There are a wide range of date and time formatting options available.

Delete text

To delete part of the old file name type the text you want to be removed in the **Delete** box on the Advanced tab.

Replace text

To replace the text in file names: Enter the text to be replaced in the **Replace** box and the replacement text in the **With** box.

4.10 Email Images

Arles allows you send your images by email. Large images can be automatically resized to prevent very large email messages.

Select images

To add images to the email window select them in the Image Explorer and click the Email button or drag and drop them from the Image Explorer to the Email Images window.

Remove images

To remove images from the Email Images window, select them and press the Delete key.

Select image size

Select a maximum image size if you want Arles to reduce the image sizes. This is handy if you don't want to send very large email messages that can take a long time to upload and download. The estimated total email size is shown below image size box.

Options

By default images are sent with the default Windows email application. Click the Options button to [change the way](#)^[19] you want to send your emails.

4.11 Viewing EXIF Info

What is EXIF?

Most images taken with digital cameras contain a EXIF (Exchangeable Image File Format) section. In this section data like the date and time the picture was taken, shutter speed and exposure time is

stored.

View EXIF information

To view EXIF information select an image in the Arles Image Explorer and select **Image** menu > **EXIF Information** or right click any image and select from the popup menu the **Info** menu > **EXIF**.

4.12 Editing Image IPTC Info

What is IPTC?

IPTC image information allows you to store information like titles, keywords, creation date in your image files. It is a world wide standard supported by many other image editing and managing applications like Adobe Photoshop.

Arles supports IPTC for JPEG and TIFF image files.

Why should I use it?

By storing captions and keywords in your images you can easily share image information with other applications and you can easily move to other computers or email them without losing title information.

Does the JPEG image quality degrade when saving IPTC information?

No. Image quality is fully maintained. Arles only modifies the IPTC information section in a JPEG or TIFF file when saving IPTC changes.

Edit IPTC information

To edit IPTC information:

1. Select an image in the Arles Image Explorer.
2. Select **Image** menu > **IPTC Information**.

Note

You can use the Alt+Left and Alt+Right keys to browse through all images without taking your hands off the keyboard.

Edit IPTC information for multiple images

To edit IPTC information for multiple images:

1. Select multiple images in the Arles Image Explorer.
2. Select **Image** menu > **IPTC Information**.

Only the fields with selected checkboxes will be modified.

IPTC Templates

IPTC Templates are an easy way to quickly fill or modify IPTC fields. For example, you can save your copyright information in a template and load it with one click each time you want to add it to a range of images.

To apply first click the Templates button in the IPTC image information window. Next select an item from the templates box and click Load.

Template load options

Clear current IPTC info

Clears the current IPTC information before loading the new template. Unselect this option if you only want to add new fields to the current IPTC contents.

Add keywords instead of replace

Any keywords in the template will be added to the current keywords. If you don't select this option all current keywords will be cleared.

Add sup. categories instead of replace

Any supplemental categories in the template will be added to the current categories. If you don't select this option all current supplemental categories will be cleared.

To create a new template:

1. Set the IPTC fields.
2. Select the correct Load options
3. Click the Save button.

To delete a template:

1. Select the template.
2. Click the Delete button.

Add IPTC information to a gallery

To set the IPTC caption field as thumbnail title in a gallery:

1. In the main window select the Titles tab.
2. Set the thumbnail title to **Image IPTC caption**.
3. Recreate your gallery by clicking the **All** or **HTML** button in the main window.

To show all IPTC information in the thumbnail title:

1. In the main window select the Titles tab.
2. Set the thumbnail title to **Image IPTC information**.
3. Recreate your gallery by clicking the **All** or **HTML** button in the main window.

To add any IPTC field to a gallery:

1. In the main window select the Titles tab.
2. Click the Advanced button.
3. In the Advanced Title Options window select (eg **Thumbnail title**).
4. From the Tags section select **Image IPTC tag**.
5. In the tag <ImageIPTC Tag="Caption"> replace Caption with an other IPTC field name like **Headline**.
6. Recreate your gallery by clicking the **All** or **HTML** button in the main window.

4.13 Editing JPEG Comment

What is a JPEG comment?

JPEG images can contain a comment section inside the image file. It allows you to store up to 65534 characters of text inside the JPEG file.

Edit the JPEG comment

To edit the JPEG comment section:

1. Select a JPEG image in the Arles Image Explorer.
2. Select **Image** menu > **JPEG comment**.

Note

You can use the Alt+Left and Alt+Right keys to browse through your images without taking your hands of the keyboard.

Edit JPEG comments for multiple images

To edit the JPEG comment section for multiple images:

1. Select multiple images in the Arles Image Explorer.
2. Select **Image** menu > **JPEG comment**.

Changes will only be saved to the multiple images if the **Save changes** checkbox is selected.

Add JPEG comments to a gallery

To add JPEG comments to the thumbnail or any other title in a gallery:

1. In the main window select the Titles tab.
2. Click the Advanced button.
3. In the Advanced Title Options window select **Thumbnail title**.
4. From the Tags section select **Image JPEG comment**.
5. Recreate your gallery by clicking the All or HTML button in the main window.

4.14 Data Mover

The Data Mover tools can be used to move image related data, like titles between the [Arles database](#)^[20] and the [IPTC segment](#)^[11].

To move image data

1. In the Arles Image Explorer select the **Tools** menu > **Data Mover**.
2. Select the files for which you want to move data.
3. Select the **From** field.
4. Select the **To** field.
5. Check in the Preview area that the correct data is being moved.
6. Click **OK**.

4.15 Movies

In the [Arles Image Explorer](#)^[3] you can:

- [Play movies](#)^[14] and
- [Select movie poster frames](#)^[15].

See also:

- FAQ: [How to create a gallery with movies](#)^[87]

4.15.1 Playing Movies

To play a movie:

- Select the movie in the [Arles Image Explorer](#)^[3].
- Open the Arles Image Viewer.
- Click the **Play Movie** button in the center of the image.

Supported formats

Arles supports any movie that you can play in the Windows Media Player, as it uses the decoders (codecs) that are installed on Windows. If you are having problems playing movies (you usually get a warning where it says to make sure the correct codecs are installed) try installing the K-Lite Standard package. The K-Lite Standard package is a free collection of codecs, which will allow you to play most movie formats on your computer.

http://www.codecguide.com/about_kl.htm

Arles uses the file extension to check if a file is a movie. Currently, the following extensions are supported: 3g2, 3gp, avi, flv, mov, mp4, mpeg, mpg, wmv. If you require any other file extensions, just post a request on our online support forum:

<http://www.arlesforum.com>

See also:

- FAQ: [How to create a gallery with movies](#)^[87].
- [Selecting a movie poster frame](#)^[15].

4.15.2 Select Movie Poster Frame

What is a poster frame?

The default image of a movie that is shown in the thumbnail view is called the poster frame. Most other applications show the first frame of the movie as poster frame. This is generally a bad choice, because it is often black. This is why Arles by default selects the frame at 10% of the full play time as poster frame. You can select any other frame as poster frame.

The **Select Movie Frame window** is used to select poster frames for movies. The poster frame is used in the thumbnail viewer and as thumbnail in any generated galleries.

Open the Select Movie Frame window

To open the Select Movie Frame window:

- Select the movie in the Image Explorer.
- Select the **File** menu > **Select Movie Poster Frame** or right click the **Select Movie Poster Frame** item from the popup menu.

Select a poster frame

To select a poster frame just pause the movie on the frame you want and click the **OK** button.

Keyboard and mouse shortcuts

Shortcut	Action
Left Arrow	Go one frame back
Page Up	Go one second back
Page Down	Go one second forward
Right Arrow	Go one frame forward
Spacebar or Mouse Click	Pause/Play movie
Drag Progress Indicator	Quick search

4.16 Image Explorer Options

In the Image Explorer select the **Tools** menu > **Options** to display the Image Explorer Options window. The options are automatically saved when you close Arles.

Image Explorer Options

[Image Explorer](#)^[16]

Set general Image Explorer options.

[Interface](#)^[17]

Set Image Explorer interface options.

[IPTC/EXIF](#)^[17]

Set embedded information options like EXIF, IPTC and JPEG Comment.

[Images](#)^[18]

Set image files options.

[Email](#)^[19]

Set email images options.

4.16.1 Image Explorer

Thumbnails

Width and Height

Set the width and height of the thumbnails in the Arles Image Explorer thumbnail layout.

High quality thumbnails

Select to make the thumbnails in the Arles Image Explorer look better.

These settings have no influence on the quality of the thumbnails and images generated with the [Arles Image Web Page Creator](#)^[28].

Double click action

Select what you want Arles Image Web Page Creator to do when you double click an image.

Option	Description
Edit with External Editor	Opens the Image in the external image editor.
Windows "Open"	Opens the Image in the default application. This action is exact to double clicking an image in the Windows Explorer.
Image Viewer	Shown the image in the Image Viewer.

External image editor

External image editor application. In the Image Explorer you can select files and open them in the image editor specified here by selecting **File** menu > **Edit**.

4.16.2 Interface

Confirmations

Warn when saving titles to multiple images

Switch on if you want to be warned when you are saving title changes for multiple images.

Interface

Show image hints

Select to show a tooltip with image information whenever you move your mouse over an thumbnail or grid item in the Arles Image Explorer.

Show help panel in Email Images window

The Email Images window contains a help panel which tells you how to add and remove images. Select this option to show it.

Arles Startup

Start with

Determines with what window Arles will startup

Image Explorer

Web Page Creator

Remember last open window

Start with the Image Explorer window.

Start with Arles Image Web Page Creator window.

Arles remembers the last window you closed and reopens it when you start a new Arles session.

4.16.3 IPTC/EXIF

[IPTC](#)^[11], [EXIF](#)^[10] and [JPEG comments](#)^[13] all allow storing information about the image in the file itself. IPTC is often used for descriptions and keywords while EXIF information is generally added by digital cameras and contains info about the picture, like time taken, shutter speed, aperture, etc.

IPTC information

Confirm saving IPTC information

Shows a confirmation dialog when saving IPTC changes.

Update file modification time when editing IPTC information

Updates the file modification time when saving IPTC changes.

EXIF information

Auto-rotate using EXIF orientation field

Many digital cameras leave save the orientation at which the picture is taken (e.g. normal, 90° rotated

Min height	<p>Recommended value: 800 pixels</p> <p>Minimum virtual browser height. The generated HTML image will be at least this height even if the HTML page is shorter.</p>
Max height	<p>Recommended value: 800 pixels</p> <p>Maximum virtual browser page height. Web pages that are longer than this value will be cut off. Make the max height a small value (e.g. 600 pixels) if you only want to show the top part of long pages. Select a large value (e.g. 2,000 pixels) if you want to show the complete web page.</p> <p>Be careful when specifying large values, like 5,000 or more pixels. Very large images will be generated for long web pages. This will slow down Arles, and might in some cases even crash older computers running Windows 95/98/ME. Only select a value of more than a 1,000 pixels if you have a modern computer running Windows 2000, XP or better.</p> <p>Recommended value: 800 - 2000 pixels.</p>
Website load timeout	<p>Creating images of websites ⁸⁷ can take a long time if the site's web server is slow or if you have a slow Internet connection. When loading takes longer than the timeout value, the image is generated even if the page has not been completely loaded. If you are on a slow modem connection you might want to increase this value to 60 seconds or longer.</p> <p>Recommended value: 30 seconds</p>

4.16.5 Email

You can email images from the Image Explorer. You can specify here how you want to email those images.

Email method

Emails can be send using three different methods.

Default Windows email program (MAPI)

Emails will be sent using the default Windows email application (eg Outlook Express). Arles will prepare the images and automatically open the default Windows email application. You can then type your email message text in your default email application.

Default Windows email program, Compose in Arles (MAPI)

Emails will be sent using the default Windows email application. The difference with the first option is that you can now compose the message in Arles.

External email server (SMTP)

The emails will be sent using an external SMTP email server. The message will be composed in Arles.

Email

Your name

When you send messages this name will show up in the From field.

Your email address

This is the email address people should respond to when sending you an email. The email address should be in the format yourname@yourdomain.com. For example jane@hotmail.com.

Outgoing mail server (SMTP)**SMTP server name**

Specifies the SMTP server used for sending your email messages. Ask your Internet Service provider or your system administrator if you don't know what to put here.

My server required authentication

Select this option if your SMTP servers requires you to specify a password.

Account name

The name you use to login into your SMTP server.

Password

The password used to login into your SMTP server.

4.17 Images Database

What is the Arles Images Database?

Most of the image information you edit in the Arles Image Explorer (titles, image rotation and sorting order) is stored in the Arles Database. Titles are stored in the image files ([IPTC segment](#)^[11]) for those images that support IPTC (jpeg and tiff files).

Where is the Images Database located?

The Arles Images Database is located by default in the following folder:

```
C:\Program Files\Digital Dutch\Arles Image Web Page Creator\data
```

Database tasks

[Cleaning the database](#)^[21]

[Backing up the database](#)^[21]

[Restoring a database](#)^[22]

[Checking and repairing the database](#)^[22]

[Export data to text file](#)^[22]

[Import data from text file](#)^[23]

4.17.1 Cleaning the database

Cleaning the database will reduce the database size. You can select the information you want to be removed when cleaning the database.

To clean the database:

1. In the Arles Image Explorer select **Database** menu > **Clean....**
2. In the Database Clean window click the **Clean** button.

The current database size is indicated at the top.

What does clean do?

The database clean utility:

- clears cached thumbnails that have not been accessed for 8 days.
- It removes records for files that no longer exist on your computer.
- It removes records for files that no longer contain any information like title, rotation or cropping area information.

To clear all cached thumbnail images:

1. In the Arles Image Explorer select **Database** menu > **Clean....**
2. In the Database Clean window click the **Clear All Cache** button.

Clean Options

Remove entries pointing to non existing images

Information for image files that no longer exist on your computer will be removed.

Remove cached thumbnails not used for 8 days

Arles caches thumbnail images to speed up showing images in the Arles Image Explorer. Thumbnail cache that has not been accessed for the specified amount of days will be removed.

Cache image explorer thumbnail images

Arles caches thumbnails to speed up showing images. Uncheck this option if you do not want to cache thumbnails. Be warned that the thumbnail view will be much slower. Press the **Clear All Cache** button to actually remove all thumbnail images from the database.

Warn if database grows larger than 50 MB

Select this option if you want Arles to warn you on program exit when the database size has grown larger than the specified amount of mega bytes.

4.17.2 Backing up the database

To backup your database:

1. In the Arles Image Explorer select **Database** menu > **Backup**.
2. Specify a backup file name.
3. Click **OK**.

4.17.3 Restoring a database

To restore a Arles images database:

1. In the Arles Image Explorer select **Database** menu > **Restore**.
2. Select a Arles database backup file.
3. Click **OK**.
4. Confirm that you want to overwrite the current database.

4.17.4 Checking and repairing the database

To check your database integrity and repair any possible problems:

1. In the Arles Image Explorer select **Database** menu > **Administration** > **Check and Repair**.

4.17.5 Export to text file

All data edited in the Image Explorer is stored in the Arles database. This data can be exported to a text file by using the Export Database Data wizard.

To export data from the Arles database:

1. In the Arles Image Explorer select **Database** menu > **Administration** > **Export to Text File**.
2. Follow the instructions of the Export wizard.
3. Click **Finish**.

Wizard options

Step 1: What do you want to export?

Select **Images data** if you want to export image titles and other image information. Select **Folders data** if you want to export folder titles.

Database Export options

You can export all data or only the data for a folder.

Step 2: Select fields to export

Select the checkbox for all fields you want to export. If you want to import data into the database later, make sure the **Filename** field is selected. This field is required for the [database import](#)^[23].

Step 3: Specify export file name

Specify the file name of the export file.

Field delimiter

This is the character that will be added between all fields.

Text delimiter

Text fields will be enclosed in this character.

When you are satisfied with the results, click the **Finish** button to start the export process.

4.17.6 Import from text file

To import data into the Arles database:

1. In the Arles Image Explorer select **Database** menu > **Administration** > **Import from Text File**.
2. Follow the instructions of the Database Import wizard.
3. Click Finish.

Wizard options

Step 1: What do you want to import?

Select **Images data** if you want to import image titles and other image information. Select **Folders data** if you want to import folder titles.

Step 2: Select import file

Select the import file.

Field delimiter

Delimiter between the import fields.

Text delimiter

Text fields are enclosed in this character.

Step 3: Select column types and records

The grid will show the data from import file. If all data is shown in the first column, you probably selected the wrong field delimiter. In that case click the **Back** button and select the correct field delimiter.

Start from row

Indicates at which row the data starts. If the first column contains the field name select Start from row 1.

Select columns

For each column select the field from the drop down boxes. You should at least select a Filename column. Without a filename Arles does not know

Select rows

Select the checkbox for each data row that you want to import.

When you are satisfied with the results, click the **Finish** button to start the import process.

4.17.7 Changing the database location

To change the location of the Arles Images Database:

1. In the Arles Image Explorer select **Database** menu > **Administration** > **Change Location**.

Note

The database folder needs have read and write permissions for all users.

4.18 Keyboard Shortcuts

[Image Explorer shortcuts](#) ²⁴

[Image Viewer shortcuts](#) ²⁶

[IPTC Window shortcuts](#) ²⁷

[JPEG window shortcuts](#) ²⁸

4.18.1 Image Explorer

The following shortcuts can be used in the Image Explorer window.

Shortcut	Action
Ctrl + A	Select all images
Ctrl + B	Show/Hide Folder Bookmarks ⁸ panel
Ctrl + D	Bookmark ⁸ current folder
Ctrl + E	Show image EXIF information
Ctrl + I	Show image IPTC information
Ctrl + J	Show JPEG comment window
Ctrl + K	Select Filter box
Ctrl + M	Mark image checkbox
Ctrl + N	Unmark image checkbox
Ctrl + L or [Rotate image 90° left
Ctrl + P	Show/Hide image preview panel
Ctrl + R or]	Rotate image 90° right

Ctrl + U	Select parent folder (Go one level up)
Ctrl + W	Close window
Ctrl + Shift + E	Edit file
Left or Up	Select previous image
Right or Down	Select next image
Home	Select first image
End	Select last image
PageUp	Scroll one page up
PageDown	Scroll one page down
Delete	Delete image
Return	Execute default action
Shift + Return	Edit image
F1	Show help
F2	Rename file
F3	Open Web Page Creator window
F4	Show/Hide subfolders
F5	Refresh view
F6	Rename files tool
F7	Define thumbnail and image crop areas
F8	Email image
F10	Take screenshot
F11	Toggle between full-screen and normal window.
F12	Show image in viewer
Mouse click	Select image
Ctrl + Mouse click	Add image to selection
Shift + Mouse click	Select range of image. The selection starts at the focused item, which is marked by a dotted rectangle around the filename.
Shift + Ctrl + Mouse click	Add range of images to the selection.
Mouse Drag and Drop	Sort images or folders manually
Mouse wheel	Scroll one row
Ctrl + Mouse wheel	Scroll one page
Shift + Mouse wheel	Select next/previous image
Alt + Left or Alt + Down or Alt + PageDown	Select previous image. Works also when editing titles.
Alt + Right or Alt + Up or Alt + PageUp	Select next image. Works also when editing titles.
Alt + Home	Select first image. Works also when editing titles.
Alt + End	Select last image. Works also when editing titles.

Ctrl + Alt + Up	Select the previous folder in the folders treeview
Ctrl + Alt + Down	Select the next folder in the folders treeview
Ctrl + Alt + Right	Expand the current folder in the folders treeview
Ctrl + Alt + Left	Collapse the current folder in the folders treeview

4.18.2 Image Viewer

The following shortcuts can be used in the Image Viewer window.

Keyboard shortcuts

Shortcut	Action
0 or Numpad * or *	Zoom to fit.
1 or Numpad / or /	Zoom 100%.
2	Zoom 200%.
3	Zoom 300%.
4	Zoom 400%.
5	Zoom 50%.
+ or Numpad + or Ctrl + Left mouse	Zoom in.
- or Numpad - or Alt + Left mouse	Zoom out.
Del	Delete image file.
Esc or Ctrl + W	Close window.
F10	Move image viewer to next monitor. This only works if you have two monitors attached to your computer.
F11	Toggle between full-screen and normal window.
Left or Up	Scroll image if scrollbars are visible. Otherwise select previous image.
Page Down or Spacebar or Return	Select next image.
Page Up	Select previous image.
Right or Down	Scroll image if scrollbars are visible. Otherwise select next image.
Ctrl + Left or Ctrl + Up or	Scroll fast if scrollbars are visible.

Ctrl + Right Ctrl + Down	
Shift + Left or Shift + Up or Shift + Right or Shift + Down	Scroll 1 pixel at a time if scrollbars are visible.
Ctrl + I	Show/Hide image information panel.
Ctrl + L or [Rotate image 90° left.
Ctrl + M	Mark image checkbox.
Ctrl + N	Unmark image checkbox.
Ctrl + R or]	Rotate image 90° right.
Alt + Left or Alt + Down or Alt + PageDown	Select previous image. This shortcut is especially handy in the title areas where the arrow keys don't work.
Alt + Right or Alt + Up or Alt + PageUp	Select next image.
Alt + Home	Select first image. Works also when editing titles.
Alt + End	Select last image. Works also when editing titles.

Mouse shortcuts

Shortcut	Action
Left click	Zoom on area (when clicking the selection area).
Left click and drag	Move image (when scrollbars are visible). Create selection area (when scrollbars are not visible).
Shift + Left click and drag	Create selection area.
Ctrl + Left click	Zoom in. The cursor is used as zoom center.
Alt + Right click	Zoom out. The cursor is used as zoom center.
Left double click	Toggle between full screen window and normal window.
Middle click	Toggle between "100% zoom" and "Zoom to fit". The cursor is used as zoom center.
Mouse wheel	Zoom image. The cursor is used as zoom center.
Shift + Mouse wheel	Select next/previous image.

4.18.3 IPTC Window

The following shortcuts can be used in the [IPTC window](#) ¹¹.

Shortcut	Action
Alt + Left or	Select previous image.

Alt + Down or Alt + PageDown	
Alt + Right or Alt + Up or Alt + PageUp	Select next image.

4.18.4 Jpeg Comment Window

The following shortcuts can be used in the [Jpeg Comment window](#)^[13].

Shortcut	Action
Alt + Left or Alt + Down or Alt + PageDown	Select previous image.
Alt + Right or Alt + Up or Alt + PageUp	Select next image.

5 Arles Image Web Page Creator

Select the Arles Image Web Page Creator to create online web galleries. To open the Web Page Creator click the Arles Image Web Page Creator icon in Windows. If you started with the [Arles Image Explorer](#)^[3], click the **Web Pages** button on the toolbar to open the Arles Image Web Page Creator window.

[Getting started](#)^[1]

Getting started tutorial on how to create an image webpage gallery.

[Files Tab](#)^[29]

Setting file name and folder options.

[Thumbnails Tab](#)^[34]

Setting thumbnail options.

[Images Tab](#)^[36]

Setting image options.

[Index Page Tab](#)^[38]

Setting thumbnail index page options.

[Image Pages Tab](#)^[51]

Setting image pages options.

[Titles Tab](#)^[55]

Setting thumbnail, image and page title options.

[Publish Files](#)^[59]

Publish the generated image galleries.

[HTML Templates](#)^[68]

Using Arles HTML templates.

5.1 Files Tab

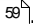
[Quick start...](#) 

File locations

Source folder

Location of the original image files.

Target folder

The target folder is where all files generated by Arles will be saved. The contents of this folder is what needs to be [published to your server](#) .

Arles never overwrites original image files, which is why you cannot modify images if the source folder is the same as the target folder. The following **Target folder types** are available:

Subfolder	All generated files will be put in a subfolder of the source folder. For example, if you specified "arles_gallery" as subfolder and your images are in "C:\Images", the generated files will be saved in "C:\Images\arles_gallery\".
Same as source folder	Arles will save all generated files in the same folder as the original images. With this setting your original images will get mixed with files generated by Arles. This often makes things more difficult to organize, which is why we don't recommend this setting.
Other	All gallery files will be put in the defined target folder.

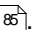
Overwrite thumbnails and images

You can select to recreate all thumbnails and images or to only create them for new and modified images.

Ask me	A dialog asking for overwrite confirmation will be shown every time thumbnails are created or images are modified.
Overwrite all	Recreates all thumbnails and generated images. You have to use Overwrite all if you changed any thumbnail or image option, like thumbnail width or the image border style.
New and modified only	Creates thumbnails and images for new or modified images only. Use this option if you did not change any settings for your gallery, but just want to add new images.

This option is faster than **Overwrite all**, but keep in mind that you have to use **Overwrite all** if you changed any thumbnail or image options. If you don't do so you won't see the changes.

Add subcategories

Select to create a subcategories section at the top of your index page which will link to subfolders containing images. Subcategories are only created if you use the [multi-folder processing tool](#) .

Advanced options

Click the [Advanced](#) button to set advanced file location options.

5.1.1 Advanced Files Options

In the **Advanced Files Options window** you can specify how the files generated by Arles will be named and in which folder they should be stored. You can also tell Arles about other user files that you want to be included in the gallery.

[File Names tab](#)

[Folders tab](#)

[User Files tab](#)

5.1.1.1 File Names

The File Names tab in the [Advanced Files Options window](#) allows you to specify where the files generated by Arles should be stored.

Thumbnails

The generated thumbnails files have a different name than the original images to prevent overwriting. A **Prefix** and a **Suffix** can be added to the thumbnail file name. The thumbnail file name is constructed as follows:

```
<Prefix>Thumbnail_FileName<Suffix>.Extension
```

Images

By default images have the same name as the original images. You can select to add a **prefix** or **suffix**.

Index pages

The HTML index file name is composed of the **file name (without extension)** and the **file extension**. Selecting *index* for the file name and *html* for the extension results in *index.html* for the first index file name. The second index page will be name *index2.html*, *index3.html*, etc.. The file extension can be either selected from the drop down list or typed directly in the edit box.

Image pages

Select **Image file name** if you want to name the image webpages after the original images. If the original is called *spain.jpg* the page will be called *spain.html*.

Select **User defined** if you want to provide all images with a similar name. The HTML image file names

are composed of the **File name (without extension)** and the **File extension**. Selecting *imagepage* for the file name (without extension) and *html* for the file extension, results in *imagepage.html* for the first image file name. The file extension can be either selected from the drop down list or typed directly in the edit box.

Tip: You can select a default HTML file extension for new galleries in the [Web Page Creator Options window](#)^[76].

5.1.1.2 Folder

The Folders options tab in the [Advanced Files Options window](#)^[30] allows you to specify where the files generated by Arles should be stored.

Folder names

Thumbnails folder

Folder containing thumbnails images generated by Arles.

Image pages folder

Folder containing HTML image pages generated by Arles.

Images folder

Folder containing images copied or modified by Arles.

Original images folder

Folder containing copied original images. This folder is only created if you link the thumbnails or images to the original images.

Navigation and background images folder

Folder containing navigation and background images, which are used on the HTML pages.

Stylesheets folder

Location of stylesheet files (*.css).

Options

Target folder

Places the image files in the [target folder](#)^[29].

Subfolder

Places the image files in a subfolder of the target folder. Specify the subfolder name in the edit field.

You can specify multi-level subfolders by using slashes (e.g. "imagepages/images"). Relative paths (e.g. "../..../arlesimages") are also allowed. Relative paths are always in reference to the source folder. If you want a fixed path use the User Defined option.

For the navigation images the subfolder is always with reference to the index pages. For image pages the path is automatically corrected, to make sure there are no duplicate folders.

User defined

For experienced users only!

The user defined option allows you to specify what you want to be placed in front of each file name. It is mostly used to specify a custom path.

You can use User Defined location if you have several image galleries on your web server and want them to share the same navigation images to avoid duplicate images. You can do this by setting the Navigation and background images to User Defined. Next set the User defined path to:

```
http://www.yourdomain.com/navigation_images/
```

Don't forget the trailing slash or the path will be broken. Arles will now create galleries with navigation images like this:

```

```

You will have to place the correct images in the navigation_images folder yourself.

Arles will not create files if you set the location type to User Defined. Therefore, depending on what locations you set to User Defined, some parts of the generated gallery will be broken when you click the Show Results button. You have to make sure that you place required files in the right location on the web server to make things work.

When using User Defined for the images, you can also not use [title tags](#) that contain information about created images. For example, you can not use file size title tag. As Arles does not create the images, it also does not know the size of the created images.

Folder tags

Two folder tags can be used in subfolder or user-defined folders. Both are for advanced users only and are used in combination with the [multi-folder processing](#) feature.

<FolderName>

This tag will be replaced with the source folder name. If the processed folder is "c:\images\holidays\2005\greece", it will replace the <FolderName> tag with "greece".

<PathFromRootFolder>

This tag only works when multi-folder processing and inserts path from the root folder to the source folder.

If your root folder is "c:\images" and you are processing "c:\images\holidays\2005\greece", it will replace the <PathFromRootFolder> tag with "/holidays/2005/greece". This feature is especially helpful if your images are hosted in another location than your galleries.

Stylesheet options

Embedded

Style information is embedded in the index and image webpages. Select this option if you don't want separate stylesheet files.

HTML folders

The style sheet files will be placed in the same folder as the index page or image pages.

User defined

For experienced users only! Several Arles layout settings may not work as expected with this option.

A user defined path is helpful if you create your own stylesheets manually and want to link to them directly. Arles will **not** create stylesheets with this option selected. By default Arles appends the template name to the path you specify. For example, if you set the user defined path to:

```
http://www.yourdomain.com/stylesheets/
```

Arles will attach the stylesheet filename and add the following link to the `<head>` section of the generated index pages:

```
<link rel="stylesheet" TYPE="text/css" HREF="http://www.yourdomain.com/stylesheets/index.css">
```

If your path ends with ".css" then Arles assumes that the path already includes a stylesheet filename. In this case Arles will not append the default stylesheet filename. For example, if your user defined path is set to:

```
http://www.yourdomain.com/stylesheets/yourstylesheet.css
```

Arles will add the following line to the generated HTML pages:

```
<link rel="stylesheet" TYPE="text/css" HREF="http://www.yourdomain.com/stylesheets/yourstylesheet.css">
```

None

For experienced users only! Several Arles layout settings may not work as expected with this option.

No stylesheets and links to stylesheets will be created. The class names will still be available, which allows you to create own stylesheets. You can link your own stylesheets by using [Custom HTML](#)^[43] section or by using the Arles [HTML Templates](#)^[68] feature.

5.1.1.3 User Files

The **User Files** tab in the [Advanced Files Options window](#)^[30] allows you to select the files you want Arles to automatically copy to the index page or image pages folder. User files are also automatically [published](#)^[59] to your webserver.

What are user files?

You don't need the user files feature when using standard Arles layout features like [navigation](#)^[40] of [banners](#)^[43].

However, if you customize the gallery by using the [HTML Templates](#)^[68] feature you may want to copy files to the index page or image pages folder. This situation can happen if you want to add another stylesheets. Or when you created a design with your own background images.

In all these cases you probably want to select these files as user files. Arles will then automatically copy the files to the index page and image pages folder when generating the gallery. It will also upload any user files to your webserver when you use the [Publish Files tool](#)^[59].

Index pages

Click the **Add** button in the Index pages area to select files for the index page folder. You can select multiple files in the Open file dialog by holding the **Ctrl** or **Shift** button.

Image pages

Click the **Add** button in the Index pages area to select files for the image pages folder. You can select multiple files in the Open file dialog by holding the **Ctrl** or **Shift** button.

5.2 Thumbnails Tab

Size

Use the **Height** and **Width** boxes to set the height and width of the thumbnails.

Lock aspect ratio

The aspect ratio is the relation between the image width and height. Unselect this option if you want the thumbnail to exactly fit the height and width. However, it will make the thumbnails look distorted depending on how much the aspect ratio of the original differ from the thumbnail aspect ratio. If you all thumbnails to have the same size it is generally better to select the **Crop to fit** option.

Crop to fit

Selecting the [Crop to fit](#) ^[36] option if you want the generated thumbnails to fit exactly the specified size. Any borders that do not fit will be cut off. Select the [Crop Options](#) ^[36] button to set the crop position.

Image Effects

Use image effects to add text labels, logos, borders, dropshadows or other effects to your your thumbnails. Click the Options button to open the [Image Effects window](#) ^[63].

Advanced options

Click the [Advanced](#) ^[34] button to set advanced images properties.

5.2.1 Advanced Thumbnail Options

To open the Advanced Thumbnail Options window in the [Web Page Creator window](#) ^[28] select the [Thumbnails tab](#) ^[34] and click the **Advanced** button.

Image processing tab

Resize method

Select the [resize method](#) ^[81]. *Lanczos 3* or *Mitchell* generally provide the highest quality results. Select **Only reduce thumbnails** to leave images, which are smaller than the specified thumbnail width and height unmodified.

Sharpen

Applying a sharpen effect after resizing thumbnails leads to the highest quality results. Select **Apply to resized thumbnails only** if you want to apply the sharpen effect only if a thumbnail has been resized.

Filter

Select the image [filter](#) to be applied to thumbnails.

Save tab

File save format

Select the default format that Arles uses to save thumbnails.

[JPEG or PNG? ...](#)

JPEG image quality

Use the slider to select the image quality of generated JPEG images. Better quality also means larger file size. Generally, values between 70 and 90 are a good trade off between high quality thumbnails and reasonable file sizes. Select 70 if you want the smallest file size with acceptable image quality. Select 90 for good quality images with acceptable file sizes.

If you are working on a CRT monitor, keep in mind that LCD monitors show image artifacts of low quality JPEG images sooner than CRT monitors. One other thing to keep in mind is that due to the nature of JPEG compression, blurry images compress better than sharp ones. If small file sizes are critical, turn off the sharpen filter or [select Mitchell resize method instead of Lanczos 3](#).

Transparency

Save transparency (requires PNG & Internet Explorer 7)

Arles can process and save PNG images with transparency information. Note, that galleries with transparent PNG images require Microsoft Internet Explorer 7 or better. Internet Explorer 6 and older versions contain a bug prevent transparent PNG images from showing up properly. The transparent parts of the image will show up in a strange color on older IE versions. The Opera and Firefox web browsers handle transparent PNG images just fine.

Use webpage background color for transparent areas

Select if you want Arles to use the webpage background color as background color for transparent areas in the images.

Background color

Color to be used for transparent areas, like dropshadows, in images.

Subcategories tab

Set options for [subcategory](#) thumbnails. You can switch on subcategory generation on the [File Locations](#) tab.

Thumbnail size

Sets the subcategory thumbnail size. Select "Same size as other thumbnails" if you want any subcategory thumbnails to be the same size as the standard thumbnails.

Image effects

Select image effects for subcategory thumbnails. Select "Same effects as other thumbnails" if you do not want to specify a custom effect.

Movies tab

Set options for movie thumbnails. It is generally a good idea to indicate to the visitors of your website that a thumbnail links to a movie instead of a normal image file. Adding a "Movie" text image effect on the thumbnail is one way to do this.

5.2.2 Crop to fit

To open the Crop to Fit Options window, in the [Web Page Creator window](#)^[28] select the [Thumbnails tab](#)^[34] and click the **Crop Options** button.

What is crop to fit?

The Crop to fit option will make the generated thumbnails fit exactly the specified height and width. Any borders that do not fit will be cut off.

Crop position

The crop position specifies the focus area of the crop. Set the both horizontal and vertical positions to 50% if you want the center of the image to remain. If the important areas of your images are located at the top, set the vertical position to 0%.

5.3 Images Tab

Resize

Your original images can be resized using the same [resampling technique](#)^[31] as for creating the thumbnails. Download times are reduced when smaller images are made available. Also, resizing an image collection of different sizes to one standard size creates a more balanced and professional looking site.

The aspect ratio will automatically be maintained. The height and width values are therefore maximum values. To prevent overwriting of original images, resizing will not work when the [source and target folders](#)^[29] are identical.

As an alternative for the image resize option, size information can be added to the HTML text in the [advanced image page window](#)^[32].

To prevent overwriting of original images, the *Resize* option will not work when the [source and target folders](#)^[29] are identical.

Image Effects

Use image effects to add text labels, logos, borders, dropshadows or other effects to your your

thumbnails. Click the Options button to open the [Image Effects window](#)^[63].

Location

The destination images location can be set on the [Advanced File Locations Page](#)^[30].

5.3.1 Advanced Image Options

To open the Advanced Image Options window in the [Web Page Creator window](#)^[28] select the [Images tab](#)^[36] and click the **Advanced** button.

Image processing

Resize method

Select the [resize method](#)^[81]. Lanczos or Mitchell generally give the best results. Select "Only reduce images" to leave images smaller than the specified width and height unmodified.

Sharpen

Applying a sharpen effect after resizing images leads to the highest quality results. Select **Apply to resized thumbnails only** if you want to apply the sharpen effect only if a image has been resized.

Filter

Select the image [filter](#)^[81] to be applied to images.

File save format

File save format

Select the default format that Arles uses to save images.

[JPEG or PNG? ...](#)^[80]

To prevent quality loss, GIF and JPEG images will only be copied and not converted if they are not modified. You can override this behavior by selecting the *Always save images* option (see below).

Always save images

Select to force Arles to always save images, even when no image processing like resize is specified. Use this if you want to save JPEG images with a new quality level without doing any other image processing. It also comes handy if you want to save your JPEGs as PNG images or PNGs as JPEGs.

Maintain JPEG EXIF, IPTC and comment information

JPEG images can contain [EXIF](#)^[10], [IPTC](#)^[11] and [comment](#)^[13] information inside the image file. Select this option if you want this information to be copied to the modified images.

JPEG quality

Use the slider to select the image quality of generated JPEG images. Better quality also means larger file size.

Generally, values between 70 and 90 are a good trade off between high quality images and reasonable file sizes. Select 70 if you want the smallest file size with acceptable image quality. Select 90 for good

quality images with acceptable file sizes.

If you are working on a CRT monitor, keep in mind that LCD monitors show image artifacts of low quality JPEG images sooner than CRT monitors. One other thing to keep in mind is that due to the nature of JPEG compression, blurry images compress better than sharp ones. If small file sizes are critical, turn off the sharpen filter or [select Mitchell resize method instead of Lanczos 3](#) ^[81].

Tip

For top quality lossless images, select PNG images as default output graphic format.

Transparency

Save transparency (requires PNG & Internet Explorer 7)

Arles can process and save PNG images with transparency information. Note, that galleries with transparent PNG images require Microsoft Internet Explorer 7 or better. Internet Explorer 6 and older versions contain a bug prevent transparent PNG images from showing up properly. The transparent parts of the image will show up in a strange color on older IE versions. The Opera and Firefox web browsers handle transparent PNG images just fine.

Use webpage background color for transparent areas

Select if you want Arles to use the webpage background color as background color for transparent areas in the images.

Background color

Color used for transparent areas, like dropshadows, in images.

5.4 Index Page Tab

Index table

Columns and rows

Set the columns and rows to define the thumbnail table format.

Single page

Multiple index pages, including navigation links, will be created if there are more images in the source folder than would fit on one page. For example, if you specify 2 rows and 2 columns, multiple index pages will be generated if there are 5 or more images in the source folder. You can force all images on one single index page by selecting the *Single page* option. This will override the rows option.

Cell pad

Cell padding is the space inside each table cell.

Border

Click the Border button to edit the table and cell borders.

Gallery style

Select the style from the pull down box to set the gallery style.

Standard

The thumbnail index page will link to separate image pages.

Index frame left

Thumbnails will be shown on the left of the images.

Index frame right

Thumbnails will be shown on the right of the images.

Index frame top

Thumbnails will be shown above the images.

Index frame bottom

Thumbnails will be shown below the images.

Click the **Options** button to set [gallery style options](#)^[39].

Navigation links

The navigation links are only used when multiple index pages are created.

Click the *Top* and/or *Bottom* option to select the position of the navigation links. Click the *Options...* button to modify the [navigation links](#)^[40].

HTML Design

Click the HTML Design button to set the [HTML page properties](#)^[43] like colors, background image, etc.

Advanced options

Click the [Advanced](#)^[45] button to set the advanced index page properties.

5.4.1 Gallery Style Options

Use this window to set options for gallery styles using frames.

Index frame file name

The index frame file name is composed of a file name prefix and an extension. Selecting "myfilename" for the file name prefix and "htm" for the default extension results in "myfilename.htm" for the index frame file name. You can also set filenames for the main index file and the image files. The default HTML file extension can be set in the [Environment Options](#)^[76]. The main page name can be set in the [Advanced Index page options window](#)^[45].

Frame margins

The margin width and margin height are the space inside each frame. Use this option to prevent the contents of the HTML page to be placed directly against the side of the Browser window.

Border

Set the frame border (between the index and image pages) by selecting the type from the pull down list

box.

Auto synchronize thumbnails with images

Select this option to automatically scroll the related thumbnail in view when a new image page is loaded.

Index frame sizes

The size of left, right, top and bottom thumbnail index frames can be automatically calculated by Arles Image Web Page Creator. Unselect Auto to set the index frame height and width yourself.

Index frame scrolling

With auto scroll selected the thumbnail row will automatically scroll through all thumbnails. You can set the scrolling speed and decide if you want to stop the scroll effect when hovering with the cursor above the index frame.

5.4.2 Navigation Options

In the navigation options window you customize the looks of the navigation links on the generated gallery pages.

Presets

Select a preset to use any of the predefined navigation styles from the drop-down list. You can save your own navigation settings as a preset by clicking the Save as button. Click Delete to remove a preset.

Tip

Hold the **Ctrl** button when clicking the **Save** button to save the current preset with the same name.

General

Text label

Specifies the text label of navigation item. If a button image is selected for the navigation item, the text label will be used as alternate text (alt) for the image.

Button image

Set this field to use a button image instead of text for the navigation link. Arles Image Web Page Creator contains many ready to use images in the [buttons folder](#)^[77]. Click the browse button to select a navigation image.

Link

The link field is only used for the Home navigation item. Use this item to include a link to your home page (e.g. <http://www.digitaldutch.com/arles>).

Target

Set target to `_top` if you want to break out of any frames when clicking the Home navigation button or link. Select `_blank` if you want to open your home page in a new window.

When generating HTML the navigation image will be copied to a sub-folder of the target folder. You can set the sub-folder name in the [Advanced File Locations window](#)^[30].

Note, that Arles removes any unnecessary links. For example, the first index page will not contain the First navigation link.

Index page tab

Select the checkboxes of each navigation item you want to include in your galleries.

Navigation bar

Creates a navigation bar for multi-level galleries. This option is mostly used in combination with the [multi-folder processing tool](#)^[85]. The multi-folder root folder is also the top level for the navigation bar.

Home

Link to your home page. Use the link field to specify the location.

Up

Go one level up. This option is mostly used in combination with the [multi-folder processing tool](#)^[85]. The Up item is not shown on the top level, which is the root folder as specified in the multi-folder processing window.

First

Link to the first index page.

Previous

Link to previous index page.

Next

Link to next index page.

Last

Link to last index page.

Quick list

Drop down box containing quick links to all other index pages.

Index

Current index page number text (e.g. "Index 3").

Of

'Total number of index pages available (e.g. "of 10").

Image pages tab

Select the checkboxes of each navigation item you want to include in your galleries.

Navigation bar

Creates a navigation bar for multi-level galleries. This option is mostly used in combination with the [multi-folder processing tool](#)^[85]. The multi-folder root folder is also the top level for the navigation bar.

Slideshow Start/Stop

Adds a slideshow start/stop button. You must also enable the slideshow on the [Image Pages tab](#)^[51] for the button to show up.

Home

Link to your home page. Use the link field to specify the location.

Index

Link to index page.

First

Link to first image.

Previous

Link to previous image.

Next

Link to next image.

Last

Link to last image.

Quick list

Drop down box containing quick links to all other images in the gallery.

Image

Current image number text (e.g. "Image 3").

Of

Total number of images available (e.g. "of 10").

Accessibility

Select **Enable shortcut keys** to enable navigating generated galleries with keyboard shortcuts. Shortcuts have a few disadvantages though, especially in the Internet Explorer.

Firefox browser

In the Mozilla Firefox web browser shortcuts work as expected. Selecting a shortcut will directly perform the required action. For example, clicking Alt+N will load the next image page in the browser.

Internet Explorer

In Microsoft Internet Explorer shortcuts only select the navigation item in question. You always have to click the Return key to perform the action. For example, clicking Alt+N will select the **Next** link. You must click the **Return** key to actually load the next image page. Similarly to go to the previous page, click Alt+P and then Return.

Note

Gallery shortcut keys will override browser shortcut keys. For example, in the English version of Internet Explorer the Alt+F key combination normally opens the File menu . If you decide to use the Alt+F shortcut in your gallery then the original Internet Explorer File menu shortcut will no longer work. Therefore be careful which keys you specify, as some visitors of your pages may not like this behavior.

Options

Disabled buttons

Arles disables navigation buttons when they have no function. For example, the First button is disabled

on the first image page.

Select Hide if you want hide buttons which are disabled. Select Replace with spacer to replace disabled buttons with a similar sized space. This will lock the button better in its place on the web page and prevent "jumping" buttons which some users find awkward.

Navigation layout

Select Use table to add a HTML table structure around the navigation links. The table structure is required to set the spacing between the navigation items. Uncheck the Use table option to enable wrapping of the navigation links in smaller browser windows.

5.4.3 HTML Design Options

The **HTML Design** window allows you to set the design of the generated index and image pages.

To open the **HTML Design** window:

- In the [Arles Image Web Page Creator](#) window select the **Index Page** tab or **Image Pages** tab.
- Click the **HTML Design** button.

Layout

On the layout tab you can set the default colors and background image for the generated webpages. Title fonts can be set in the [Font and Style Options](#) window.

Banners

To add a banner:

- Select the **Top** or **Bottom** checkboxes to add a banner to the generated webpages.
- Select the image you want to use for your banner in the **Image** box.
- Set the link of your banner to a fully valid website link like <http://www.digitaldutch.com>. Make sure you add the "http://" part if you want the banner to work on any webserver.
- The Alt text is the text that appears when the banner is not yet fully loaded. It is also used as a tooltip.

Custom HTML

Custom HTML allows you to add your own HTML code to the generated webpages. The custom **HTML at the top of the page** will be located directly below the top banner. The custom **HTML at the bottom of the page** will be located directly above the bottom banner.

Use **HTML added to page <head> section** to insert all code you want to include into the page head section. This option comes in handy for advanced users who want to add their own Javascripts or META tags.

Image pages

By default the image pages have same design as index page(s). Uncheck **Image pages have same design as index page(s)** to specify a different design for the image pages.

For Image Pages you can use [title tags](#) in the Custom HTML code to add specific image information like . Right click the Image Pages Custom HTML memo fields to insert title tags.

Tip

Use [templates](#) for maximum control over the HTML page design.

5.4.4 RSS Feed Options

What is an RSS feed?

RSS feeds are a way to publish your website contents (images in the case of Arles) to the world. One of the main advantages of RSS feeds is that users do not have to visit a website to see what has changed. But is also used in several other ways by many applications, search engines and news websites. By selecting the RSS feed option in Arles, a RSS feed file will automatically be generated and uploaded to your website every time you update and publish your image galleries.

Options

RSS feed filename

This is the name of the file containing the RSS information. You generally do not need to change it.

Website location

According to the official specifications RSS files must contain only full links (e.g. <http://www.yourdomain.com/gallery/index.html>) to be valid. This is why you have to specify the website location of the gallery (e.g. <http://www.yourdomain.com/gallery/>). The good news is that more and more applications also work with relative links (e.g. [gallery.html](#)). Leave the website location empty if you want to use relative links in your feed file.

The advantage of using relative feeds it that your RSS file will still work even if you move a gallery to a different website location. The disadvantage is that the feed file is not officially valid and may not work with some feed readers.

Applications that do work with relative links:

- Google Reader
- Internet Explorer
- Opera web browser
- PicLens browser plug-in for Firefox and Internet Explorer

Applications that do **not** work with relative links:

- Firefox
- FeedDemon

Edit Feed Titles

Clicking this button will open the [Advanced Title Options window](#) where you can edit all titles including the RSS feed title, RSS feed description, RSS feed image titles and RSS feed image descriptions.

5.4.5 Advanced Index Page Options

To open the Advanced Index Page Options window, in the Arles Image Web Page Creator select the **Index Page** tab and click the **Advanced** button.

Advanced Index Page Options

[General](#)^[45]

General index page options.

[Table](#)^[46]

Thumbnail table options.

[Border](#)^[47]

Table and cell border options

[Thumbnail](#)^[48]

Thumbnail layout options.

[Thumbnail Links](#)^[48]

Thumbnail links options.

[Popups](#)^[49]

Popup options.

[Options](#)^[50]

Label and print service options.

5.4.5.1 General

The following options are available on the [Advanced Index Page Options](#)^[45] window General tab.

Create index pages

Unselect this option if you want Arles to only generate image pages.

Security

Disable right clicking

Select if you want a warning to pop-up whenever a visitor right-clicks a thumbnail. This feature can be used to protect your images from being easily saved. Click the **Options** button to change the message that will be shown.

This protection is quite weak and can be easily worked around by disabling JavaScript in the browser or by taking a screenshot. We recommend to add some [text](#)^[64] or [logo](#)^[65] on the images themselves instead. You may also want to consider that many visitors use their right-click menu for other purposes and may be annoyed when they find out it does not work on your webpages.

You can disable right-clicking images in the [Advanced Image Pages Options window](#)^[52].

RSS Feed

Select to make Arles automatically generate a [RSS Feed](#)^[44] for your gallery. Click the Options button to edit the [RSS Feed options](#)^[44].

Options

Automatically launch from CD (CD Autorun)

Select if you want to create an image gallery that is automatically launched from a CD. Arles will add two files (autorun.inf and arlesrun.exe) to the gallery target folder to enable this windows feature.

Text-only gallery (Thumbnails will not be visible)

Select if you want to create a gallery with text links only. The thumbnails will not be shown on the index pages.

Text-only subcategories (Subcategory thumbnails will not be visible)

Select if you want to create a gallery with text-only links to [subcategories](#)^[85]. The subcategory thumbnails will not be shown on the index pages.

Page layout

Page alignment

Sets the horizontal alignment of the index page.

5.4.5.2 Table

The following options are available on the [Advanced Index Page Options](#)^[45] window Table tab.

Table options

Table width

Specify a fixed (e.g. 600 pixels) or relative (e.g. 90%) width for the thumbnail table.

Table design

Color pattern

The following table color patterns are available:

Color pattern	Description
[None]	No table color applied.
Single Color	The complete table has a single background color.
Single Color (Cells only)	All table cells have the same background color. The spacing between the cells shows the page background color.
Horizontal stripes	Table rows have alternating colors.
Vertical stripes	The vertical table columns have alternating colors.

Checked	Table cells are colored in a checkerboard pattern.
---------	--

Background image

Thumbnail table background image.

5.4.5.3 Borders

The following options are available on the [Advanced Index Page Options](#)⁴⁵ window Borders tab.

Table border options

Width

Width of table border. Set the border width to zero to remove table borders.

Border style

The following border styles are available:

Style	Description
All	All borders are shown
Around cells	Borders are drawn around each table cell. The Cell spacing has to be 1 or larger for this option to work.
Around cells & table	Borders are drawn around each table cell and around the full table. The Cell spacing has to be 1 or larger for this option to work.
Below	Horizontal borders are drawn below each table row.
Inside	Only borders inside the table are shown.
Inside horizontal	Only horizontal borders inside the table are shown

Cell spacing

The cell spacing is the space between table cells. It is only enabled for some border styles like **Around cells**.

Line style

Select the border line style. Some styles, like **double** or **groove**, need the border width to be 2 pixels or larger.

Color

Color of border.

Thumbnail border options

Set the Thumbnail HTML Border to specify a HTML border width for the thumbnails. It is recommended to use Image Borders instead. Image Borders create borders directly in the images and allow special effects like 3D and button style borders. You can specify Image and Thumbnail Borders in the [Image Effects Window](#)⁶³.

Due to HTML limitations the color of the HTML border will be same as the selected HTML Text Color. The Text Color can be set in the [HTML Design Options Window](#)⁴³.

5.4.5.4 Thumbnail

The following options are available on the [Advanced Index Page Options](#)^[45] window Thumbnail tab.

Thumbnail / title layout

Title location

Location of title relative to thumbnail.

Title/thumbnail margin

Margin between title and thumbnail image.

Thumbnail alignment

Thumbnail table cell alignment

Title text alignment

Horizontal alignment of title text.

Cell vertical alignment

Vertical alignment of thumbnail table cell

Cell size

All cells have same width

Select if you want all cells in the thumbnail table to have same width. Arles will automatically calculate and set the width for all columns.

Width

Thumbnail table cell width.

Height

Thumbnail table cell height.

5.4.5.5 Thumbnail Links

The following options are available on the [Advanced Index Page Options](#)^[45] window Thumbnail Links tab.

Links

Link what?

Select which part of the thumbnail should be linked.

Link to

Specifies where the thumbnails are linked to.

[None]	No thumbnail links will be created. Select this option if you don't need Image Pages and only want to create Index Pages.
Image pages	Default option. A Image Page is created for each image. This page can contain navigation items or any other options you specify on the Image Pages Tab ^[51] .

Image pages (popup)	The image pages are shown as popup windows. When selected a Popup tab ^[49] will appear that allows you to set all popup options.
Image pages (with original images)	Arles will create image pages with original images. Use this option if you only want to create webpages without changing the images.
Images	Links directly to the modified images. No Image Pages are created.
Images (popup)	The images are shown in a popup window. No Image Pages are created. When selected a Popup tab ^[49] will appear that allows you to set all popup options.
Original images	Images will only be copied, not modified. The thumbnails will link directly to these original images. For example, for a TIFF image the link will be directly to this TIFF image.
Custom link	Links to the URL specified in the custom link field. You can insert image links and titles in this field by using <FileLink>, <FileTitle1>, <FileTitle2>, <FileName> or any other title tags ^[56] . Click the drop down button to select tags. Image links and titles can be set in the Arles Image Explorer ^[3] .

Link Target

Select a Thumbnail Link Target if you want to add a HTML target attribute to the thumbnail link tag.

Link non-images (movies, links) to the original files

Select if you want the thumbnails of non-images to be linked directly to the original files. For example, a thumbnail for a movie will be linked to the movie file and a thumbnail for a URL file will be directly open the Internet Page defined in the URL.

See also:

- [How to create a gallery from movies?](#)^[87]
- [How to create galleries of web pages?](#)^[87]

5.4.5.6 Popups

The image pages or images can be shown in a popup window if you set the [link thumbnails to](#)^[48] to **Image pages (popup)** or **Images (popup)**. The **Popups** tab will only be visible if you select one of these two options.

The following options are available on the [Advanced Index Page Options](#)^[45] window Popup tab.

Size

Auto

Arles will estimate the optimal size for the popup window. This will work fine generally, but sometimes you will have to set the width and height manually.

Fixed

Select if you want to set the popup window width and height manually.

Full screen

Arles will show the popup window in full screen view. Note that some visitors may not allow your website to resize the browser to full screen. In addition, this options can only be selected with the **Image pages (popup)** link type.

Close

Add close link

Select if you want Arles to add a close link to the popup window. Visitors can click this link to close the popup window.

Clicking the image closes the popup window

When selected, the visitor can click the image to close the popup window.

Close text

Text that will appear for the close link.

Close button image

Select a button image in this field if you prefer a close button instead of a close text. The **Close text** will be used as button tooltip.

Options

The following options can be set for popup windows:

Resizable window

Makes the popup window resizable.

Show statusbar

Adds the statusbar to the popup window.

Open each image in same window

Select if you want the same popup window to be used for each image. Unselect, if you want multiple popup windows to appear.

Show scrollbars

Adds scrollbars to the popup window if the popup contents does not fit completely in the popup window.

Show toolbar

Adds the toolbar to the popup window.

5.4.5.7 Other

The following options are available on the [Advanced Index Page Options](#) ⁴⁵ window Other tab.

Online Print Service

Arles can automatically add links to online print services like Shutterfly.com (United States) and Photocolor.ch (Germany and Switzerland). Click the Options button to set online print service options. Note, that this feature is still experimental, so we cannot warrant that this function is error free or meets your requirements.

Labels

No images text

This text will be shown when a gallery has no images. It is mostly used in the [multi-processing mode](#) ⁸⁸

5.5 Image Pages Tab

HTML design

Select the *custom* option and click *Edit...* to set the [HTML page properties](#)^[43] (e.g. colors, background image) for the image pages manually.

Select the *Template* option to obtain full control over the web page HTML design. Click the *Browse* button to open the [template window](#)^[68].

Navigation links

Check the *Top* and/or *Bottom* options to add navigation links to the image pages. Click the *Options...* button to modify the [navigation links](#)^[40].

Slideshow

Select *Add slideshow* to automatically browse through your image pages. Click *Options* to open the [Slideshow Options window](#)^[51].

Advanced options

Click the [Advanced](#)^[52] button to set the advanced image pages properties.

5.5.1 Slideshow Options

This window allows you to set all slideshow options. A slideshow allows you to automatically load the next image after a predefined delay time.

Delay

The delay specifies after how many seconds the next page will automatically load.

At end

Select the At end action to specify what happens after the last image has been loaded.

Go to index page

The index page will be loaded after the last image.

Restart

The first image will be loaded after the last image.

Stop

The slideshow will stop at the last image.

Add Start/Stop button

To allow users of your slideshow to temporary stop and restart an image gallery, add a Start/Stop button. You can specify button properties in the [Navigation Options window](#)^[40].

Status bar messages

The time remaining until the next image is loaded can be shown in the status bar of the Browser window. The text fields allow you to modify all parts of the slideshow status bar messages.

Technical information

For several advanced slideshow features like the Start/Stop button and status bar messages JavaScript will be added to the generated HTML pages. Simple galleries will be created by adding a META refresh tag to the HTML page headers.

Tip

To automatically start the slideshow on your web site, link directly to the first image page instead of the index page.

5.5.2 Advanced Image Pages Options

To open the Advanced Image Pages Options window, in the Arles Image Web Page Creator select the **Image Pages** tab and click the **Advanced** button.

Advanced Image Pages Options

[General tab](#) ⁵²

Set general options.

[Image Links tab](#) ⁵³

Set image link options.

[Movies tab](#) ⁵⁴

Set movie options.

[Effects tab](#) ⁵⁴

Set page transition effects.

[Other tab](#) ⁵⁵

Set Online Print Service options.

5.5.2.1 General Tab

Page layout

Page alignment

Sets the horizontal alignment of the image pages.

Image HTML border

Set the Image HTML Border to specify a HTML border width for the images. It is recommended to use Image Borders instead. Image Borders create borders directly in the images and allow special effects like 3D and button style borders. You can specify Image Borders in the [Image Effects Window](#) ⁶³.

Due to HTML limitations the color of the HTML border will be same as the selected HTML Text Color. The Text Color can be set in the [HTML Design Options Window](#)^[43].

Security

Disable right clicking

Select if you want a warning to pop-up whenever a visitor right-clicks an image in your gallery. This feature can be used to protect your images from being easily saved. Click the **Options** button to change the message that will be shown.

This protection is quite weak and can be easily worked around by disabling JavaScript in the browser or by taking a screenshot. We recommend to add some [text](#)^[64] or [logo](#)^[65] on the images themselves instead. You may also want to consider that many visitors use their right-click menu for other purposes and may be annoyed when they find out it does not work on your webpages.

You can disable right-clicking thumbnails in the [Advanced Index Page Options window](#)^[45].

Options

Preload next image

Select if you want the next image in the gallery to be loaded in the background while the visitor is looking at a image page. With this option the next page will load much faster as the image is already loaded. This feature is especially useful for people that visit your image gallery with a slow Internet connection.

Disable Internet Explorer image toolbar

Microsoft's Internet Explorer automatically shows a toolbar for large image that allows visitors to easily save or print the image. Select this option if you want to hide this toolbar.

5.5.2.2 Image Links Tab

Specifies where the images are linked to.

Link images to

Specified what happens if you click the image.

[None]	Default option. No image links are created.
Next image	Links the image to the next image. The last image links to the first image.
Index page	Links the image to the index page.
Original image	Links the image to the original image. Select this option if you want to show your images and provide visitors with the option to download the originals.
Close window	Clicking the image will close the window. This is especially handy when the image pages are popup windows.
Custom link	Links to the URL specified in the custom link field. See below.

Link target

Select a Image Link Target if you want to add a target argument to the image link tag.

Custom link

The Custom link field is only visible if the **Link images to** field is set to **Custom link**. You can insert image links and titles in this field by using <FileLink>, <FileTitle1>, <FileTitle2>, <FileName> or any other [title tags](#)^[36]. Click the drop down button to select tags. Image links and titles can be set in the [Arles Image Explorer](#)^[37].

Link non-images (movies, links) to the original files

Select if you want the images of non-images to be linked directly to the original files. For example, a thumbnail for a movie will be linked to the movie file and a thumbnail for a URL file will be directly open the Internet Page defined in the URL.

This setting is ignored for movie files if you have [embedded movies](#)^[54] switched on.

See also:

[How to create a gallery from movies?](#)^[87]

5.5.2.3 Movies Tab**Embed movies**

Embeds movies in the image webpage using the Microsoft Windows Media Player control. If you do not embed movies the [poster frame](#)^[15] will be shown instead, which may be preferable if you want to [link the thumbnails or poster frame to the movie file](#)^[87].

Embedded player options**Auto-start**

When selected the movie starts playing as soon as the webpage is loaded. Without this setting the visitor needs to click the Play button on the embedded player first.

Show controls

shows movie controls toolbar at the bottom of the embedded movie.

Fit movie to player

When selected the movie will be scaled. If not selected the movie will be shown at 100% if it is smaller than the embedded player.

5.5.2.4 Effects**Page transition effects****Add transition effect (Internet Explorer only)**

Select if you want to have dynamic transition effects when loading an image page. The effects only work in the Microsoft Internet Explorer webbrowser. The reason for this is that there is not standard for page transitions. Other browsers like, Firefox or Opera, will just ignore any specified effects.

Type

Select the type of transition effect. Random will assign each image page with a random transition effect.

Duration

Duration of transition effect. Internet Explorer does not allow durations larger than 2 seconds.

5.5.2.5 Other Tab**Online Print Service**

Arles can automatically add links to online print services like Shutterfly.com (United States) and Photocolor.ch (Germany and Switzerland). Click the Options button to set online print service options. Note, that this feature is still experimental, so we cannot warrant that this function is error free or meets your requirements.

Image size information

Note: We do not recommend to use this option. Your images will show up in an inferior image quality. Use the Image Resize option on the [Images Tab](#)^[36] in the Main Window instead.

Arles automatically sets the width and height tags of images to make sure the generated gallery page loads faster. Select the Set Image Size Information checkbox to override the default image height and width. The Browser will rescale the image to the selected size.

However, web browsers resize images in an inferior way compared to Arles. Therefore we recommend not to use this option. This option is available because some users find it convenient to set the width to 50% to make sure the image always fits in the browser window, even if this reduces the image quality. To maintain correct image proportions (aspect ratios), select either width or height, but not both. Did we mention that we don't recommend to use this option?

5.6 Titles Tab**Index page****Gallery title**

The gallery title is shown at the top of the index pages. You can use [folder title tags](#)^[38] like <FolderName> tag to insert the source folder name into the gallery title. The easiest way to insert title tags is in the [Advanced Title Options window](#)^[36].

Thumbnail title

To set thumbnail titles, select a title type. Click the **Location** button for [more options](#)^[46].

Image pages**Image titles**

To set image titles, select a title type and location.

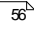
Navigation quicklist

The navigation quick list title is the title shown in the quick list drop down box in the navigation bar. The quick list will only appear if it is selected in the [gallery navigation window](#)^[40].

Fonts

Click the [Fonts](#)  button to set title font styles.

Advanced title options

Click the Advanced button to open the [Advanced Title Options Window](#) .

Tip

You can put titles directly in your images by selecting the Add text option on the [Images tab](#) .

5.6.1 Advanced Title Options

To set titles, select a title type on the left and type the title text in the **Type title** field. You can insert title tags by selecting them from the right side Tags area.

Index page titles

Gallery title

Title appearing on top of the index page.

Page caption

Text appearing in the caption of the Browser window when the index page is loaded.

Thumbnail table title

Title appearing above the thumbnails table.

Thumbnail title

Thumbnail titles. The position can be set with the locations listbox.

Thumbnail tooltip

The tooltip appears when you hover in your browsers over a thumbnail. Both the "alt" and "title" attributes are set.

Subcategories title

Title appearing above the subcategory thumbnails table.

Subcategory thumbnail title

Title appearing below or above the subcategory thumbnails. The position is the same as the thumbnail title position.

Subcategory thumbnail tooltip

The tooltip appears when you hover in your browsers over a subcategory thumbnail. Both the "alt" and "title" attributes are set.

Image pages titles

Page caption

Text appearing in the caption of the Browser window when an image page is loaded.

Image titles

Image titles. The position can be set with the locations listbox.

Image tooltip

Alternative text for image. This title appears when you hover with your cursor over an image in your Browser.

Navigation quicklist

Title appearing in the [quick list navigation item](#)^[40] on the index page.

Title tags

Title tags are a way to insert folder and image specific information in the titles. You can use, for example, the `<FolderName>` tag to insert the source folder name into the title. Or use `<FolderTitle>` to insert the folder title, which you can [set in the Arles Image Explorer](#)^[6]. Or you can use the `<FileSize>` in the thumbnail title to insert the file size of the generated image.

- Available [Image Title Tags](#)^[88]
- Available [Folder Title Tags](#)^[88].

Tips

- You can [specify titles](#)^[5] for each image in the [Arles Image Explorer](#)^[3]. Title tags can also be used in the Title 1 and Title 2 areas in the Image Explorer and in the custom HTML area for the Image Pages.
- You can use HTML in the title area, if you switch on the [Allow HTML in Titles](#)^[76] option in the Web Page Creator Options window.
- To modify date and time formats select Regional Options in the Windows Control Panel.
- [Text can also be added to your thumbnails and images](#)^[64] by using the [image effects window](#)^[63].

5.6.2 Font and Style Options

Use the **Font and Style Options** window to set the font types and sizes for all titles. You can set the default page font colors in the [HTML Design](#)^[43] window.

Open the window

To open the **Font and Style Options** window:

- In the [Web Page Creator](#)^[28] window select the **Edit** menu > **Font and Style Options**.
- or
- In the Web Page Creator window select the [Titles tab](#)^[55].
 - Click the **Fonts** button.

Change a title font

To change a title font:

- Select the Title item on the left .
- Change the font style using the Font Type, size and color controls.

5.6.3 Image Title Tags

The following Arles title tags can be used in titles and other fields supporting image title tags:

Name	Tag
File date (long format)	<FileDateLong>
File date (short format)	<FileDateShort>
File index	<FileIndex start=10 digits=2>
File link	<FileLink>
File name	<FileName>
File name without extension	<FileNameNoExt>
File size	<FileSize>
File time	<FileTime>
File title 1	<FileTitle1>
File title 2	<FileTitle2>
Image bit depth	<ImageBitDepth>
Image color type	<ImageColorType>
Image colors	<ImageColors>
Image EXIF information	<ImageExif>
Image EXIF summary	<ImageExifSummary>
Image EXIF date	<ImageExifDate>
Image EXIF tag	<ImageExif Tag="DateTime"> <ImageExif Tag="ExposureTime"> etc.
Image height	<ImageHeight>
Image IPTC information	<ImageIPTC>
Image IPTC tag	<ImageIPTC Tag="Caption">
Image JPEG comment	<ImageJPEGComment>
Image page file name	<ImagePageFileName>
Image pixels with unit label (e.g. 1.3 megapixels)	<ImagePixels>
Image width	<ImageWidth>
Original file name	<OriginalFileName>
Original file size	<OriginalFileSize>
Original image height	<OriginalImageHeight>
Original image pixels with unit label (e.g. 1.3 megapixels)	<OriginalImagePixels>
Original image width	<OriginalImageWidth>

You can also use [folder title tags](#) ⁵⁸ in image titles.

5.6.4 Folder Title Tags

The following title tags can be used in titles and other fields supporting folder tags:

Name	Tag	Description
Arles file name	<ArlesFileName>	The file name of the Arles settings file.

Folder image count	<FolderImageCount>	Number of images inside the source folder. When used inside a subcategory thumbnail title it only works when multi-folder processing.
Folder total image count (including subfolders)	<FolderImageTotalCount>	Total number of images inside the source folder including subfolders. This tags only works when multi-folder processing.
Folder last modified date (long format)	<FolderDateLong>	Last modified date of source folder (long format)
Folder last modified date (short format)	<FolderDateShort>	Last modified date of source folder (short format)
Folder name	<FolderName>	Folder name. If the source folder is "C:\Images\Holidays\France", this tag will insert the name of the folder "France".
Folder title	<FolderTitle>	Folder title as specified in the Arles Image Explorer ^[3] .
Folder title or name	<FolderTitleOrName>	Inserts the folder title or the folder name if no title has been specified.
Source folder	<SourceFolder>	Full source folder path as specified on the File Locations tab ^[28] .
Target folder	<TargetFolder>	Full target folder path as specified on the File Locations tab ^[28] .
Gallery title	<GalleryTitle>	Inserts the gallery title.

5.7 Publish Files

For others to be able to see your gallery on the Internet, you have to upload all generated files to a web server. To open the **Publish Files window** in the [Arles Image Web Page Creator window](#)^[28] select the **Tools** menu > **Publish Files**.

Publish what?

Select what you want to publish to your web server.

Created Gallery

Publish all files of the current gallery. Subfolders are not included. If you want to upload multiple galleries use the "All Files in Folder" option.

All Files in Folder

All files in the selected local folder will be uploaded. Generally you want to set this to the Target folder as specified in the main window. Select *Include subfolders* if you also want to publish the files located in subfolders.

The *All Files in Folder* upload option is not limited to gallery files created by Arles. If you want you can upload your complete website with this option.

Publish where?

Select where you want to publish your gallery. Click the **Edit** button to set the [publish location](#)^[61].

Actions

Publishing your files goes in three steps.

1. Find & Check

Click the "Find Check" button to find the files to be uploaded. Arles will also connect to your web server to check which files have been modified.

At this stage you can still check or uncheck files that you want or don't want to be uploaded. By default Arles selects only files that are modified, making the upload process much faster if only a few files have been modified. If you want to upload all files select all files (Ctrl+A) and select the File menu > Select Checkbox.

2. Publish

Click **Publish Now** to upload all selected files to the web server.

3. Show website

Click the **Show Website** button to view the uploaded gallery in the default Windows browser. You can specify the URL for show in the [Publish Location window](#)^[61].

After you uploaded everything to your web server you can link from other Web pages to the generated image gallery by creating a link to the index file. The index file is named `index.html` by default, but it can be renamed in the [Advanced Files Options window](#)^[30].

View

All Files

Shows all files.

Modified Files Only

Shows the modified files only.

View log

Shows the publish log. This can be handy for trouble shooting if uploading does not work as expected.

Options

Publish Location

Opens the [Publish Location window](#)^[61].

Publish Options

Opens the [Publish Options window](#)^[62].

Third party FTP tools

It is recommended to use the Arles Publish function. But if you prefer to use a third party FTP tool to upload your gallery, make sure you upload images in the binary mode. Uploading images in the ASCII mode, will often result in corrupted images.

All generated HTML pages and images are located in the target folder as specified on the [File locations tab](#) in the main window. The generated thumbnails are, by default, located in a subfolder named 'thumbnails'.

To publish the pages on an Internet server the complete contents of the [Target folder](#) contents (including the thumbnails subfolder) must be copied to the server.

5.7.1 Publish Location

Arles uses the FTP protocol to upload your gallery to your web server. Ask your Internet Service provider or your system administrator if you don't know what to put here.

Title

This is a user friendly name for the publish location settings specified in this window.

Presets

You can save and load the options in this window by using the preset box, save and delete buttons. This is handy if you publish multiple galleries to the same server.

FTP Server tab

FTP server

Name of the ftp server (eg ftp.yourdomain.com).

User name

The user name you use to login into the FTP server. Select Anonymous if your server does not require a login and password.

Password

FTP password required to login into the FTP server.

Remote folder

Remote folder on your server where you want the uploaded gallery to be placed (eg /home/yourname/www/gallery/ or gallery/). Your web host has generally provided you with a folder where you web site files should be placed to show up on the Internet. To make sure your default web pages are not overwritten, it is recommended to put the gallery in a subfolder or the main website folder.

URL for show

The [Publish Files window](#) contains a Show Website button which opens the uploaded gallery in a browser. You

Use passive FTP

Some firewalls don't allow active FTP. Select this option if you are having problems connecting through a firewall.

Proxy tab

Select this option if you connect to the Internet through a proxy server. Most people don't use this

option.

Test

Click the Test button to check if Arles can connect to your FTP server.

5.7.2 Publish Options

Find & Compare Options

Mark files that should be deleted from server

By default Arles deletes old gallery files from your web server when they are no longer in use by the gallery. Unselect this option if you don't want files marked as "Delete from server" to be selected.

Publish Options

Number of simultaneous connections

Arles can upload multiple files at the same time. This options sets the number of parallel connections. Five (5) is generally a safe choice for maximum upload speed.

Some FTP servers do not like applications to initiate multiple connections. In your server is one of those, set the number of connections to one (1) and switch off the Keep Alive feature which also uses a parallel connection.

Timeout after no server response for 30 seconds

If a connection is broken Arles will keep trying to send data to the server for the time you specified here. After this timeout period an error will be shown.

Retries if connection is broken

If an connection to your server fails or an error occurs Arles will retry the upload action for the number of times you specified here.

Send 'keep alive' signal during transfers

Some buggy firewalls and routers kill long FTP connections, because they think it is no longer in use. The keep alive feature is a work around for this problem. It periodically communicates with the FTP server in an effort to convince these firewalls and routers that the connections is still alive.

Confirmations

Confirm before publishing files

Select if you want to be warned before files are published to your server.

Warn before deleting files from server

Select if you want a warning dialog to be shown before any files are deleted from your server.

Warn if remote folder does not exist

Select if you want to be warned before the remote folder is created on the server in case it did not exist.

5.8 Image Effects

Use *image effects* to add text labels, logos, borders, dropshadows or other effects to your thumbnails and images. The active effects are shown in the left-side list view. The center panel allows you to change the settings for the focussed effect. The right panel shows a live preview of what the final result will look like.

To open the image effects window:

1. In the [Web Page Creator window](#) select the **Thumbnails** or **Images** tab.
2. Click the Image Effects **Options** button.

To add a new effect:

1. Click the **Add** button.
2. Select an effect.
3. Recreate your gallery by clicking the **All** or **Thumbnails** button in the Web Page Creator window.

To delete an effect:

1. Select the effect you want to delete.
2. Click the **Delete** button.
3. Recreate your gallery by clicking the **All** or **Thumbnails** button in the Web Page Creator window.

To cancel all changes since the last gallery file save:

1. Click the Reset button.

To quickly enable or disable an effect:

1. Select or unselect the checkbox in front of the effect name.

Available image effects

[Text](#)

Add a text label on the image. The text can be customized using wide range of text effects like the watermark effect, drop-shadow, rotation, transparency, outline and background.

[Logo](#)

Add a logo on the image.

[Solid Border](#)

Simple single color border. Set the transparency to create a simple transparent border.

[Drop Shadow](#)

Adds a shadow to the image. Drop shadows do not work if background images are specified for the page or table.

[3D Bevel](#)

3D bevel type. Color can not be set for this border type.

[Button](#)

Button type border.

Inverted button	Button type border with reversed color gradient.
Image overlay	An image overlay file is used for the border. See below for information on how to add your own image border files to Arles.
Mask	Uses an image mask or overlay to create special effects borders like ragged or eroded edges. See below for information on how to add you own mask files to Arles.
Grayscale	Converts the image to grayscale colors.
Sepia	Converts the image to sepia colors.
Rotation	Rotates the image.

Presets

You can select any of the predefined image effects from the **Presets** drop down list. Click the *Save as* or *Delete* buttons to add or delete presets.

5.8.1 Text labels

Text labels can be added to thumbnails and image in the [Image Effects window](#).

To add text labels to images or thumbnails:

1. In the [Web Page Creator window](#) select the **Images** or **Thumbnails** tab.
2. Select Image Effects **Options** button.
3. In the Image Effects Window click the **Add** button > **Text**.
4. Type the text to show on your images in the **Text** edit box.
5. Recreate your gallery by clicking the **All** or **Images** button in the Web Page Creator window.

Adding text labels and [logos](#) is a efficient way to discourage people from copying images from your website.

Text Options

Position

Select the preferred position from the Type drop down box. You can also position the text by clicking with your mouse in the example image.

Clicking in the image will set the X and Y offset values. These values are always with reference to the position type. For example, if you selected the right bottom position in the Type drop down box. then right bottom position will also be the zero reference position.

Font

Set the image font type by clicking the font browse button.

Anti-aliasing smoothes the edges of the fonts to make them more readable. Anti-aliasing only works with Windows NT/2000/XP or better.

Text background

Adding a background generally makes the image text more readable. Select Full Width if you want the background displayed over the complete image width. Selecting Rounded will create a rounded rectangle.

A border can be specified by setting the Border Width. Select zero if you do not want the border to show. The Horizontal Margin is the margin inside the background box. Set the horizontal and vertical margins to increase or decrease the background.

Transparency

Set the transparency of the text on the image. The Background only option allows setting a transparent background in combination with opaque text.

Watermark

Select watermark to let the text appear as a 3D watermark in the images. Select Reversed to switch the 3D effect from in to out.

Tags

Right click the Text edit box to insert title tags. [Title tags](#)⁵⁶ allow adding image information and image titles in the image text. While the example image will still show the tag, Arles will replace them with the relevant information when creating the image gallery.

The file size title tag can not be used, because the image file size can not be determined while the image is still being created.

Tip

The best watermarks are created with high contrast colors (e.g. black and white).

5.8.2 Logos

Text labels can be added to thumbnails and image in the [Image Effects window](#)⁶³.

To add text labels to images or thumbnails:

1. In the [Web Page Creator window](#)²⁸ select the **Images** or **Thumbnails** tab.
2. Select Image Effects **Options** button.
3. In the Image Effects Window click the **Add** button > **Logo**.
4. Select the logo filename in the **Logo filename** edit box.
5. Recreate your gallery by clicking the **All** or **Images** button in the Web Page Creator window.

Adding [text label](#)⁶⁴ and logos is an efficient way to discourage people from copying images from your website.

Logo Options

Position

Select the preferred position from the *Type* drop down box. Set the *X-offset* and *Y-offset* values to move

the logo with reference to the position type..

Transparency

Set the transparency of the logo on the image.

Rotation

Changes the rotation angle of the logo.

Scale

Increases or decreases the size of the logo.

Watermark

Select Use *watermark* to embed your logo as a 3D watermark in the images. Select *Reversed* to switch the 3D effect from inward to outward. The *intensity* setting increases the watermark contrast.

Tip:

Create a high contrast grayscale version of your logo for the best watermark results.

5.8.3 Borders

Borders can be added to thumbnails and image in the [Image Effects window](#)^[28].

To add borders to images or thumbnails:

1. In the [Web Page Creator window](#)^[28] select the **Images** or **Thumbnails** tab.
2. Select Image Effects **Options** button.
3. In the Image Effects Window click the **Add** button > **Solid Border** or **3D Bevel** or **Button** or **Drop shadow**.
4. Recreate your gallery by clicking the **All** or **Images** button in the Web Page Creator window.

Solid border

Single color border.

Options

Width	Width of border.
Transparency	Transparency of border. Set to zero for an opaque border. Select hundred for a fully transparent border.
Color	Border color.
Blur Width	Controls the blur of the drop shadow edges. The shadow will soften with higher blur values.
Symmetric border	For drop shadows only. Select to have borders on all sides of the image, not only on the drop shadow sides. Works best in combination with a background color.

3D bevel

3D bevel type border

Button

Button type 3D border. For options see *Solid Border* above.

Inverted button

Inverted Button type 3D border. For options see *Solid Border* above.

Drop shadow

Adds a rectangular drop shadow.

Drop shadow options

Offset	Offset to right bottom location.
Transparency	Transparency of border. Set to zero for an opaque border. Select hundred for a fully transparent border.
Blur Width	Controls the blur of the drop shadow edges. The shadow will soften with higher blur values.
Color	Border color.
Symmetric border	For drop shadows only. Select to have borders on all sides of the image, not only on the drop shadow sides. Works best in combination with a background color.

Note:

You can set HTML borders for the thumbnails and images on the [advanced index page option window](#)⁴⁵ and [advanced image pages options window](#)⁵².

5.8.4 Image Overlays

With *image overlays* a special overlay image is added to the thumbnails or images. It allows the creation of very realistic effects like, wooden borders, a paperclip in the corner or 35mm frames.

Image overlays can be added to thumbnails and image in the [Image Effects window](#)⁶³.

To add image overlays to images or thumbnails:

1. In the [Web Page Creator window](#)²⁸ select the **Images** or **Thumbnails** tab.
2. Select Image Effects **Options** button.
3. In the Image Effects Window click the **Add** button > **Image Overlay**.
4. In the options panel select an image overlay type.
5. Recreate your gallery by clicking the **All** or **Images** button in the Web Page Creator window.

Adding your own image overlays

Arles allows you to add your own Image Overlay effects. An overlay image is a PNG file with transparent areas. The transparent areas is where the original image or thumbnails will show up.

To add your own overlay image:

Two words of caution. Templates require some HTML knowledge and changing templates might disable some of the Arles features. For example, if you remove the Title section from the template, the gallery title will no longer show up.

Template types

None

No templates are used.

[Simple templates](#)

The easiest way to create templates.

[Advanced templates](#)

The most powerful, but also more complex way to create templates.

Tags

The following tags can be used in the templates:

[Available tags ...](#)

User files

If your custom design requires custom background images or stylesheet, then make sure you select them as [User Files](#). This will make sure the files are automatically copied to the index page and image pages folder and uploaded to the webserver with the [Publish Files](#) feature.

5.9.1 Simple HTML Templates

Simple templates are the most convenient way to create [HTML templates](#). If you want even more control, use the [Advanced Templates option](#).

To create your own templates:

1. Open the HTML Templates window by selecting Edit menu > HTML Templates in the main window.
2. Select the Simple templates customization option.
3. Check the "Use index page template" options.
4. Click the Create button to create a basic index page template.
5. Edit the template by clicking the Edit button. This will start your default HTML editor. You can set the default HTML Editor in the [Environment options window](#).
6. After you saved the changes to the HTML template, recreate the gallery by clicking the All or HTML button in the main window.

[Template Tags ...](#)

[Example Simple HTML Templates ...](#)

5.9.2 Advanced HTML Templates

Advanced HTML Templates are the most powerful way to create [HTML Templates](#). If you don't need all these features, use the [Simple Templates](#) option instead. Advanced templates allow you to

override default template tags. You could for example define your own navigation section.

You create a new advanced template set by clicking the Create button. Click the Edit button to find out in which folder the template files are located.

5.9.3 HTML Template Tags

Index page tags

The following tags can be used in Index Page templates.

<code>{indexpage.doctype}</code>	Inserts the doctype at the beginning of the index page file.
<code>{indexpage.htmltitle}</code>	Inserts gallery title on index pages. This tag should be placed in the title section of the template file (e.g. <code><title>{indexpage.htmltitle}</title></code>).
<code>{indexpage.head}</code>	Contains all code that Arles needs to put in the HTML <code><head></code> section. This is generally meta tags, JavaScript and custom HTML added to <code><head></code> section.
<code>{indexpage.body}</code>	Inserts complete index page HTML contents, including thumbnail table, the navigation bars, custom HTML, gallery title, etc. This tag should be placed in the <code><body></code> section of the template file. This tag is defined in "indexpage_body.html" file.
<code>{indexpage.table}</code>	Index thumbnail table.
<code>{indexpage.thumbnail width=200 height=200}</code>	Add this tag in your template to put a thumbnail (and title if specified) anywhere in your gallery. Width and height and attributes can be set to override the default thumbnail maximum width and height. Eg: <code>{indexpage.thumbnail width=200 height=200}</code>
<code>{indexpage.thumbnail.url}</code>	Inserts the url (link) to the image page. This can be used in the HTML Template of title area as follows: <code>Link text</code>
<code>{indexpage.title}</code>	Index page gallery title.

<code>{indexpage.banner.top}</code>	Index page top banner.
<code>{indexpage.banner.bottom}</code>	Index page bottom banner.
<code>{indexpage.custom.top}</code>	Custom HTML added to top of page.
<code>{indexpage.custom.bottom}</code>	Custom HTML added to bottom of page.
<code>{indexpage.align}</code>	Index page alignment. Example: <code><div align="{indexpage.align}"></code>
<code>{indexpage.table.cell.style}</code>	Index table cell info. Example: <code><td class="index_table_cell" {indexpage.e.table.cell.style}></code>

Navigation tags

Note: Navigation tags only show up if the navigation elements are also selected in the Arles Navigation Options window.

<code>{indexpage.navigation.top}</code>	Index page top navigation. The navigation section is defined in the "indexpage_navigation.html" template file.
<code>{indexpage.navigation.bottom}</code>	Index page bottom navigation. The navigation section is defined in the "indexpage_navigation.html" template file.
<code>{indexpage.navigation.home}</code>	Home navigation item.
<code>{indexpage.navigation.home.url}</code>	Link to Home.
<code>{indexpage.navigation.up}</code>	One level up navigation item. Used in multi-folder processing.
<code>{indexpage.navigation.up.url}</code>	Link to one level up index page.
<code>{indexpage.navigation.first}</code>	First page navigation item.
<code>{indexpage.navigation.first.url}</code>	Link to first index page.
<code>{indexpage.navigation.previous}</code>	Previous page navigation item.
<code>{indexpage.navigation.previous.url}</code>	Link to previous index page.
<code>{indexpage.navigation.next}</code>	Next page navigation item.
<code>{indexpage.navigation.next.url}</code>	Link to next index page.

<code>{indexpage.navigation.last}</code>	Last page navigation item.
<code>{indexpage.navigation.last.url}</code>	Link to last index page.
<code>{indexpage.navigation.quicklist}</code>	Quicklist navigation item.
<code>{indexpage.navigation.count}</code>	"Index 1" navigation item.
<code>{indexpage.navigation.count.unformatted}</code>	Index page counter (e.g. "1") without formatting.
<code>{indexpage.navigation.total}</code>	"Of 20" navigation item
<code>{indexpage.navigation.total.unformatted}</code>	Total index page count (e.g. "20") without formatting.
<code>{indexpage.navigation.bar}</code>	Inserts crumbtrail navigation bar used in multi-folder processing.

Special group comments can be used to trim the contents of the navigation section.

<code><!-- BeginNavigationElement --></code> <code><!-- EndNavigationElement --></code>	Marks a single navigation element. If the element is not selected, everything between these comments will be removed.
<code><!-- BeginNavigationGroup --></code> <code><!-- EndNavigationGroup --></code>	Marks a group of elements. If no navigation items are selected in this group everything between these comments will be removed.
<code><!-- BeginNavigationSubGroup --></code> <code><!-- EndNavigationSubGroup --></code>	Marks a subgroup of elements. If no navigation items are selected in this group everything between these comments will be removed. Subgroups can be used inside groups.
<code><!-- BeginNavigationTop --></code> <code><!-- EndNavigationTop --></code>	Marks the navigation section at the top of the page. The complete section will be removed if no navigation items are selected.
<code><!-- BeginNavigationBottom --></code> <code><!-- EndNavigationBottom --></code>	Marks the navigation section at the bottom of the page. The complete section will be removed if no navigation items are selected.

Thumbnail tags

The following tags can only be used in the "indexpage_thumbnail_imageandtitle_*.html" template files:

<code>{indexpage.thumbnail.image}</code>	Index page thumbnail image. This tag can only be used in the "indexpage_thumbnail_imageandtitle" template files.
<code>{indexpage.thumbnail.title}</code>	Thumbnail title.
<code>{indexpage.thumbnail.title.textalign}</code>	Thumbnail title text alignment.

<code>{indexpage.thumbnail.title.align}</code>	Thumbnail title horizontal alignment.
<code>{indexpage.thumbnail.title.valign}</code>	Thumbnail title vertical alignment.

Image page tags

The following tags can be used in image page templates.

<code>{imagepage.doctype}</code>	Inserts the doctype at the beginning of the index page file.
<code>{imagepage.head}</code>	Contains all code that Arles needs to put in the HTML <head> section. This is generally meta tags, JavaScript and custom HTML added to <head> section.
<code>{imagepage.body}</code>	Inserts complete image page HTML contents. This includes the navigation bars. This tag should placed be in the "body" section of the template file.
<code>{imagepage.htmltitle}</code>	Inserts HTML title on image pages. This tag should be placed in the title section of the template file (e.g. <title>{imagepage.htmltitle}</title>).
<code>{imagepage.title}</code>	Image page title.
<code>{imagepage.imageandtitle}</code>	Image and title.
<code>{imagepage.banner.top}</code>	Index page top banner.
<code>{imagepage.banner.bottom}</code>	Index page bottom banner.
<code>{imagepage.custom.top}</code>	Image page custom HTML added to top of page.
<code>{imagepage.custom.bottom}</code>	Image page custom HTML added to bottom of page.
<code>{imagepage.image}</code>	Image.
<code>{imagepage.navigation.top}</code>	Image page top navigation section.
<code>{imagepage.navigation.bottom}</code>	Image page bottom navigation section.
<code>{imagepage.navigation.slideshow.startstop}</code>	Slideshow start/stop navigation item.
<code>{imagepage.navigation.home}</code>	Home navigation item.

<code>{imagepage.navigation.home.url}</code>	Link to home.
<code>{imagepage.navigation.index}</code>	Index page navigation item.
<code>{imagepage.navigation.index.url}</code>	Link to index page.
<code>{imagepage.navigation.first}</code>	First page navigation item.
<code>{imagepage.navigation.first.url}</code>	Link to first image page.
<code>{imagepage.navigation.previous}</code>	Previous page navigation item.
<code>{imagepage.navigation.previous.url}</code>	Link to previous image page.
<code>{imagepage.navigation.next}</code>	Next page navigation item.
<code>{imagepage.navigation.next.url}</code>	Link to next image page.
<code>{imagepage.navigation.last}</code>	Last page navigation item.
<code>{imagepage.navigation.last.url}</code>	Link to last image page.
<code>{imagepage.navigation.quicklist}</code>	Quicklist navigation item.
<code>{imagepage.navigation.count}</code>	"Image 2" navigation item.
<code>{imagepage.navigation.count.unformatted}</code>	Image index (e.g. "2") without any formatting.
<code>{imagepage.navigation.total}</code>	"Of 20" navigation item.
<code>{imagepage.navigation.total.unformatted}</code>	Image total count (e.g. "20") without any formatting.
<code>{imagepage.navigation.bar}</code>	Inserts crumbtrail navigation bar used in multi-folder processing.
<code>{imagepage.align}</code>	Image page horizontal alignment.
<code>{imagepage.title.align}</code>	Image page title alignment.
<code>{imagepage.title.valign}</code>	Image page vertical title alignment.
<code>{imagepage.title.textalign}</code>	Image page text alignment.
Other tags	
<code>{navigation.option.spacing}</code>	Navigation cell spacing.

5.9.4 Simple HTML Template Example

This example shows what the most basic template looks like. You can create these templates by clicking the Create button in the [Template Window](#).

Index page template file

```
{indexpage.doctype}
<html>

<head>
<title>{indexpage.htmltitle}</title>
{indexpage.head}
</head>

<body>
{indexpage.body}
</body>

</html>
```

Image pages template file

```
{imagepage.doctype}
<html>
<head>
<title>{imagepage.htmltitle}</title>
{imagepage.head}
</head>

<body>
{imagepage.body}
</body>
</html>
```

5.10 Options

In the Web Page Creator select the Tools menu > Options to display the Web Page Creator Options window.

Go to the [Arles Image Explorer](#) to set [Image Explorer options](#) and [database options](#).

The tabs of the Web Page Creator Options window are:

General

Set general Arles Image Web Page Creator options.

HTML

Set HTML generation options.

File locations

Specify folder locations.

[Confirmations](#) ^[78]

Select which confirmation and warning dialogs you want to see.

[Browsers](#) ^[78]

Set HTML browser options.

[Other](#) ^[79]

5.10.1 General

Interface options

Show created gallery in browser after creating HTML

Select this options to automatically show newly created HTML pages in your default browser. Without this option, you have to click the **Show** button on the **toolbar** to show the generated pages.

Reopen option windows on startup

Select to start Arles with all sub windows open that were open the last time that Arles was closed.

Set Source folder when browsing in the Arles Image Explorer

Select this option is you want the source folder to automatically change when you select another folder in the [Arles Image Explorer](#) ^[3].

Startup

Load default gallery style

Arles starts with the default gallery style as specified in the **Default gallery style** drop down box.

Open most recently used Arles file

Loads the most recently used Arles file when starting Arles. Recommended if you often work with the same style files.

5.10.2 HTML

Options

Convert line breaks to HTML breaks

In HTML code line breaks require the `</br>` tag. Select this option if you want line breaks in titles to show up as line breaks in HTML pages. Arles will automatically insert `</br>` tags where required.

Allow HTML code in titles

Select when you want to use HTML code in your titles. HTML code can be handy when you want to format the title. Say you want a bold line saying "Holiday" in bold and a second line saying "Spain 2006" below that. This can be achieved using HTML tags like this:

```
<b>Holiday</b><br />
```

Spain 2006

If this option is not selected characters that are not allowed in HTML will be encoded. For example, "<" will be replaced with "<" and "&" is replaced with "&". If *Western (Latin1)* page encoding is selected, non-standard Latin characters, like "é", are also converted. In this case the character "é" is converted into "é". [Custom HTML fields](#)^[43] are never encoded, because these fields can contain raw HTML code that will not work if encoded.

Show Arles link in gallery

With this option selected a link named "Created with Arles Image Web Page Creator" is added at the end of each gallery page. This option can only be switched off in a [registered Arles version](#)^[2].

HTML document encoding and type

Document encoding

In HTML pages different languages required different encodings. Generally, you don't want to change these options if you use your language is based on the Latin alphabet, like English, Spanish or German. **Western (Latin1)** is recommended for these languages.

Unicode (UTF-8) encoding works with any world language. However, some older web servers and browsers may have a problem with Unicode encoded webpages. For maximum compatibility with older web servers and browser use a language specific encoding, like **Western (Latin1)** instead.

Document type

The document type determines the HTML contents type. Use the drop down arrow to quickly select HTML 4.01 transitional or XHTML transitional. You can also type any other coding yourself.

Encode URLs

When selected characters that are not allowed in URLs are encoded with their character number equivalent. For example, spaces are replaced with "%20". It is recommended to always have this option selected.

Use XHTML tag endings (e.g. />)

When using XHTML, tags without end tags, like
, have a forward slash before the tag end (e.g.
). Select this option to use XHTML type tag endings.

Reset

Click the **Reset** button to reset the document encoding and type to the default that works for most web pages.

5.10.3 File locations

File locations

Set the appropriate folders to specify the default locations where Arles looks for images.

Buttons images

Default folder for the button images. You can select button images for your [navigation items](#)^[40].

Background images

Default folder for the background images. Background images are used for the [HTML Design](#)^[43] window.

Banner images

Default folder for banners.

You might want to add your own button and background images to this folder to make [Style](#)^[22] transfers between computers easier. If you load a style and Arles Image Web Page Creator can not find the button or background images, it checks these folders.

The locations of thumbnails, images and navigation images are stored with the gallery settings and can be specified in the [Advanced File Locations window](#)^[30].

5.10.4 Confirmations

Confirmations

Confirm before creating target folder

Check this option to be warned when Arles creates a new target folder.

Confirm before publishing to FTP server

Check this option to be warned when Arles publishes a gallery to your web server.

Warn if critical tags are missing in templates

When using [HTML templates](#)^[68], Arles needs several tags in the templates to be able to create the gallery. You will receive a warning if Arles cannot find the tags it requires. In rare cases want to remove these critical tags from the HTML templates anyway without Arles complaining about it. Unselect this option to do so.

Recommended setting: Selected

Warn when saving transparent images

Arles can process images with transparency and save them as transparent PNG images. To correctly view galleries with transparent PNG images Microsoft Internet Explorer 7 or better is required. Internet Explorer 6 and older versions contain a bug preventing transparent PNG images from showing properly. The transparent parts of the image will show up in a strange color on older IE versions. The Opera and Firefox web browsers handle transparent PNG images just fine.

Confirm unselecting erroneous images

When Arles finds images that it cannot load because they contain errors, it will automatically unselect them in the Arles Image Explorer to prevent the load error from appearing again. Select this dialog if you want to be warned when this happens.

Show warning dialog on gallery creation errors

If an error occurs when generating a gallery Arles will show add the error message in the Progress Window log area and popup a dialog. Unselect this option if you do not want to see the error dialogs.

5.10.5 Browsers

User defined browsers

Multiple browsers can be set to show generated galleries. Type the browser name on the left side and select the browser full filename on the right. Use the drop-down menu of the **Show** button on the

Toolbar to view a generated gallery in the specified browser.

To find the correct full filename for a browser, right-click the browser icon in the Windows explorer and select Properties from the popup menu. The Target field shows the correct full filename. For Internet Explorer on Windows XP this is by default:

```
C:\Program Files\Internet Explorer\iexplore.exe
```

Default browser

The default browser is used to show the generated gallery when the **Show** button in the Web Page Creator window is clicked.

External HTML editor

This options allows you to specify the HTML editor you want to use when clicking the Edit button in the [HTML Templates Window](#).

5.10.6 Other

File modified check

The [overwrite thumbnails and images](#) option checks if files are need to be regenerated by comparing the file modification time of original images with previously generated images. It is recommended to select a 2 second tolerance when working with older FAT file systems.

Sounds

Select to play a sound when Arles is ready generating galleries or publishing.

Logging

Select to store all actions, warnings and error messages in a log file. The log file is located in the same folder as the Arles.exe file. Old log entries are automatically purged when the file size grows over 50KB. When using Arles from the [command line](#) actions and errors are always logged.

View log

Click the View log button to open the log file.

Debugging

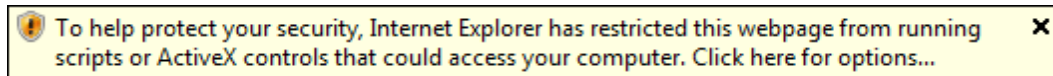
Show extensive error messages

Select to receive extensive error information for debugging. This options should only be used if you experience problems or when requested by Digital Dutch.

5.11 Other

5.11.1 Internet Explorer Security Warning

When showing the generated gallery on your local computer, Internet Explorer may show the following warning:



Internet Explorer disables by default all JavaScript in local HTML files. The good news is that the files will work just fine once they are placed on your webserver. To prevent the security warnings from showing when testing generated pages on your local computer.

Solution 1

Use the [Firefox](#) or [Opera](#) web browsers to test your galleries.

Solution 2

Tell Internet Explorer to allow scripting in local files.

- In Internet Explorer select the **Tools** menu > **Internet Options**.
- In the Internet Options window, select the **Advanced** tab.
- In the **Security** section select the **Allow active content to run in files on My Computer** option.

5.11.2 JPEG or PNG?

Arles saves generated images in a Internet compatible format. You can specify the default image file format for thumbnails and images.

JPEG or PNG?

Select JPEG to create image galleries on the web with a small download size and maximum compatibility. Select PNG if you want the best image quality.

	JPEG	PNG	Bitmap (for comparis on only)
Image information	Lossy	Lossless	Lossless
Image quality	Good	Excellent	Excellent
Compression	Excellent	Medium	None
File size	Small	Medium	Large
Browser compatibility	Excellent	Good	None

JPEG is still the standard for showing images on the Internet. The main reason being that JPEG produces the smallest files with good image quality. The main problem of JPEG is that some image information is sacrificed (lossy compression) to achieve the small image file size. A nice feature of JPEG is that the [image quality factor](#)^[34] (and thus compression) can be set. Keep in mind that even at 100% some image information is still lost.

PNG files are about 4 times larger than average JPEG files (though still much smaller than a bitmap file), but they are lossless. Just like bitmap files you can modify and save them again and again without losing any image information (lossless compression).

JPEG images are wider supported than PNG. All modern image editors and web browsers support PNG, but if you want to make sure users with old web browsers can view your image galleries, use JPEG.

5.11.3 Image Resize Methods

To resize images Arles uses advanced resample algorithms like Mitchell and Lanczos 3, which produce superior quality thumbnails and images. You can set the image resize method for both [thumbnails](#)^[34] and [images](#)^[37].

Which resize method should I use?

For top quality images use either Mitchell or Lanczos 3. Lanczos 3 is the default and arguably produces the best thumbnails of photographic images when used in combination with a [sharpen filter](#)^[81]. The Mitchell filter generally shows a little less ringing artifacts than the Lanczos 3 filter, but the thumbnails are also a bit less sharp. Some of the other filters are faster, but produce lower quality images.

Mitchell is generally your best choice if you want to make your images larger (yes you can do that too). Lanczos 3 is also recommended for graphic type images. It produces the sharpest results with the least smoothing.

Tip

If your images look somewhat fuzzy make sure you select a [sharpen filter](#)^[81].

5.11.4 Image Filters

The following filters can be applied for [thumbnails and other images](#)^[34].

Sharpen filters

Sharpen

Makes your images look sharper, by increasing the contrast between adjacent pixels with significant color contrasts, usually at the edges of objects. It lightens the light pixels and darkens the dark pixels.

Sharpen more

Sharpen filter with more intensity. Use this if the end result still looks slightly out of focus. Using this instead of sharpen can lead to artifacts on some images.

High pass

Extreme intense sharpen filter.

Blur filters

Blur

Smooths transitions and decrease contrast by averaging the pixels next to hard edges of defined lines and areas where there are significant color transitions. Apply the Blur or Soften filters to an image to reduce graininess.

Soften

Applies a uniform blur to an image.

Edge filters

Edge enhance

Increases contrast along the edges in the image.

Find edges

Enhances the contrasts between light and dark in the image by darkening the image and then highlighting the edges.

Laplace

Laplace edge detection filter

Other

Emboss

Converts the image into a bas-relief. Emboss causes the foreground to appear raised from the background by suppressing color and tracing edges in black.

5.11.5 Style Files

Styles are an easy way to share layouts between image galleries. A style contains all gallery settings from page colors to thumbnail sizes.

Saving and loading

To save the current style:

- In the [Arles Image Web Page Creator](#) window select the File menu > **Save style**.

To load a style:

- In the [Arles Image Web Page Creator](#) window select the File menu > **Load style**.

You can also load a style from a standard Arles file (*.arl).

Button and background images

The style does contain all gallery settings but not the button and background images. To use a style on another computer you have copy any banner image files and template files specified in the style. If a

button or background image can not be found, Arles Image Web Page Creator will look in the [default button and background folders](#) to check if they exist there. This is the reason why the default button and background folders are the best place to store your button and background images.

5.11.6 Command Line Run Options

In the **Run Options** window you can specify command line scripts to be run before or after generating a gallery. To open the Run Options window, in the main window select the **Edit** menu > **Run Options**.

Command to run before generating gallery

Specify the command or script you want to run before generating a gallery. Arles will wait for the command or script to finish before proceeding.

Insert tag

Click the **Insert Tag** button to insert a [folder title tag](#). Arles will automatically replace these tags with the correct content for each gallery.

Command to run after generating gallery

Specify the command or script you want to run after a gallery has been generated.

Examples

```
python c:\scripts\your_script.py
```

Runs the `your_script.py` Python script file.

```
python c:\scripts\your_script.py "<SourceFolder>" "<TargetFolder>"
```

Run a python script with the source and target folders as arguments.

Options

Save run options in gallery file

Select if you want the command line settings to be stored in the gallery file for each gallery. Unselect if you want to use the specified command for all galleries.

Run minimized

Makes the command run in a minimized window, which prevents the window from showing, disappearing and grabbing the focus every time a command is run. This is especially helpful during multi-folder processing where commands may be run many times.

5.11.7 Command Line Processing

To set up command line control, first open Arles and set all options like you want them. If everything works like you want, select the File menu > Save. Then call Arles from the command line with the settings file you just saved.

All actions, warnings and errors are stored in the [arles.log](#) file. The Arles settings files are plain ASCII. So you can edit them using a script language or ASCII text editor.

Synopsis

Open a folder in the Arles Image Explorer:

```
>arles.exe [folder]
```

Generate an online image gallery:

```
>arles.exe [options] [settings filename]
```

Options

-a, --all

Process all actions. Generate thumbnails, modify images and create HTML pages. Equivalent with clicking the All button in the toolbar.

-d, --dontclose

Don't close Arles after command line processing has finished. This option is ignored if the -n or --nogui option is selected.

-i, --images

Modify images. Equivalent with clicking the Images button in the toolbar.

-h, --html

Create gallery HTML pages. Equivalent with clicking the HTML button in the toolbar.

-l, --log

Show Arles log file after the command line processing has finished.

-m, --multifolder

Use multi-folder processing. All other options will now refer to the multi-folder processing window.

-n, --nogui

Don't show the Arles GUI (Graphical User Interface). Arles will run hidden in the background.

-p, --publish

Publish the generated gallery to the web server. Equivalent to clicking the Find & Check and Publish buttons in the Publish Files window.

-source FOLDER

Source folder for gallery creation.

-t, --thumbnails

Generate thumbnails. Equivalent with clicking the Thumbnails button in the toolbar.

-target FOLDER

Target folder for gallery creation.

-w, --webpagecreator

Startup with Web Page Creator window

Examples

Open "C:\images folder" in the Arles Image Explorer:

```
"C:\Program Files\Digital Dutch\Arles Image Web Page Creator\arles.exe" "C:\Images"
```

Create an image gallery using the gallery.arl options file:

```
"C:\Program Files\Digital Dutch\Arles Image Web Page Creator\arles.exe" -a "C:\gallery.arl"
```

Create multi-folder galleries using the gallery.arl options file and publish the results to your web server:

```
"C:\Program Files\Digital Dutch\Arles Image Web Page Creator\arles.exe" -a -m -p "C:\gallery.arl"
```

Create an image gallery using the gallery.arl options file, "C:\Images\Mexico" as source folder and "C:\Website\Images\Mexico" as target folder:

```
"C:\Program Files\Digital Dutch\Arles Image Web Page Creator\arles.exe" -a -source "C:\Images\Mexico" -target "C:\Website\Images\Mexico" "C:\gallery.arl"
```

5.12 Multi-folder Processing

To open the **Multi-folder processing** window, select in the main window the **Tools** menu > **Multi-folder processing**.

What is multi-folder processing?

The multi-folder processing window allows you to create galleries of multiple directories. Say, your images are organized as follows:

```
C:\Images
C:\Images\Holiday
C:\Images\Holiday\France
C:\Images\Holiday\Mexico
C:\Images\Family
C:\Images\Family\John
C:\Images\Family\Ann
```

Arles allows you to select the root folder C:\Images and create image galleries for each folder.

Subcategories

Arles will create links to subcategories (subfolders with images) if you switch on the **Add subcategories** option on the main window [File Locations tab](#) ²⁹.

To process multiple folders

Step 1

Select the **Root folder**. This is the folder in which all your images and subfolders with images are located.

Step 2

Set the **target folder type**:

Same as source folder

Arles will put all generated files in the same folder as the images. With this setting your original images will get mixed with files generated by Arles. This can easily become a bit messy, which is the reason why it is not recommended.

Subfolder

All generated files will be put in a subfolder of the source folder. For example, if you specified "HTML" as subfolder and your images are in C:\Images, the created files will be put in C:\Images\HTML.

Other

All gallery files will be put in the defined target folder. The target folder will have the same directory structure as the root source folder. To keep the generated files separated from the original images, it is recommended to specify a target folder outside the root folder.

Step 3

Click the **Find folders** button to search for folders with images. The treeview will now also show the target folder for each source folder.

Step 4

Select the checkboxes for the folders you want to be processed.

Step 5

Click the All, Thumbnails, Images or HTML button to start the processing. It works the same as in the main window.

The grid shows the found source folders the number of image in each folder and the destination folders.

To view the results

Select a folder in the grid and click the *Show* button to show the results.

Folder Options

You can select a **Default image** or **Custom style** for each folder on the [Folder info](#)⁶⁾ panel in the [Arles Image Explorer](#)³⁾.

Tip

Action commands in the popup menu will only process the selected folders. So, if you want to recreate HTML for only one folder, right click it and select **Create HTML** from the popup menu.

6 FAQ

6.1 How to add titles to my images?

You can add titles to your images in the Arles Image Explorer.

See: [Editing image titles...](#) ⁵

External link

- [Add titles to your images](#) tutorial on digitaldutch.com website.

6.2 How to create galleries of web pages?

With Arles you can create image galleries from website links or from local HTML files.

External link

- [Creating galleries of websites](#) tutorial on digitaldutch.com website.

6.3 How to create multi-folder galleries?

Say your images are organized as follows:

```
C:\images\holiday
C:\images\holiday\spain
C:\images\holiday\greece
C:\images\friends\johns_birthday
C:\images\friends\cathy
```

and you want to create gallery that includes all these categories with the `C:\images` folder linking to the subgalleries.

- In the Image Web Page Creator window select the *Files* tab and select the *Add Subcategories* option.
- In the Image Web Page Creator window select the *Tools* menu > *Multi-folder processing*.
- In the *Multi-folder processing window* select your top folder (e.g. `C:\images`) as *Root folder*.
- Set the *Target folder type* to *Other folder*. You can select other target folder types, but this is discouraged, because the files generated by Arles will mix with your original images making things less organized.
- In the *Multi-folder processing window* select a target folder location. This is where all files generated by Arles will be put.
- Click the *Find Folders* button on the Toolbar to find all subfolders with images.
- If you are satisfied with the results click the *All* button.

6.4 How to create a gallery with movies?

There several ways to handle movie files in the generated galleries.

Embed movies

To embed movies in the image pages using the Window Media Player control:

- In the [Web Page Creator window](#)^[28] select the [Image Pages tab](#)^[51] and click the **Advanced** button.
- In the [Advanced Image Pages Options](#)^[31] window select the [Movies tab](#)^[54].
- Select the **Embed movies** option.
- Recreate your gallery by clicking the **All** button in the Web Page Creator window.

Link the thumbnails directly to the movie file.

To link thumbnails directly to the movies:

- In the Web Page Creator window select the [Index Page tab](#)^[38] and click the **Advanced** button.
- In the [Advanced Index Page Options](#)^[48] window select the **Thumbnail Links** tab.
- Select the **Link non-images, like movies, always to the original files** option.
- Recreate your gallery by clicking the **All** button in the Web Page Creator window.

Link the image-page image to the movie file

You can also select to show the movie poster frame on the image page and link this image to the movie file. This can be done in the following way:

- In the [Web Page Creator window](#)^[28] select the [Image Pages tab](#)^[51] and click the **Advanced** button.
- In the [Advanced Image Pages Options](#)^[31] window select the **Image Links** tab.
- Select the **Link non-images, like movies, always to the original files** option.
- Recreate your gallery by clicking the **All** button in the Web Page Creator window.

6.5 Copy or move my images files without losing image titles?

Don't use the Windows Explorer to move your images if you want to keep image titles. Use the [Arles Image Explorer](#)^[3] instead, to keep title information. You can copy images by dragging and dropping them with your mouse or by using copy (Ctrl+C) and paste (Ctrl+V). To open the Arles Image Explorer click the **Browse** button in Arles Image Web Page Creator window.

IPTC

Another option is to use the [IPTC information window](#)^[27], which allows you to store IPTC information right into the image files.

6.6 Remove the "Generated With Arles Image Web Page Creator" links?

The links to the Arles website can be only be disabled in [registered versions](#)^[2] of Arles Image Web Page Creator.

To disable the Arles links for the current gallery:

- Open the Advanced Index Page Properties window by clicking the Advanced button on the Index Page tab.
- Deselect "Add link to Arles Web Site".
- Do the same in the Advanced Image Pages Properties window by clicking the Advanced button on the Image Pages tab.

To disable the links for all galleries:

- In the main window select Tools menu > Environment Options.
- In the Environment Options window, select the HTML tab.
- Select "Hide link to Arles web site for All galleries".

Index

- A -

add
 user files 33
 advanced HTML templates 69
 Arles Image Explorer 3
 options 16
 Arles Image Web Page Creator 1
 Arles link 76
 Arles web site link 52

- B -

backup database 21
 banners 43
 border (image) 66
 borders
 index table 47
 browse 3
 buy 2

- C -

CD autostart 45
 color
 HTML pages 43
 command
 execute 83
 command line processing 83
 crop
 thumbnails to fit height & width 36
 custom folder style 6
 custom HTML 43

- D -

data mover 14
 database 20
 backup 21
 change location 24
 clean 21
 export to text file 22

import from text file 23
 repair 22
 restore 22
 default image
 folder 6

- E -

effects
 images 63
 email images 10
 environment options 75
 browsers 78
 file locations 77
 general 76
 images 18
 EXIF image information 10

- F -

feeds
 RSS 44
 file locations 29
 file names 30
 file options
 advanced 30
 files
 publish 59
 rename 9
 filters
 images 81
 folder
 custom style 6
 default image 6
 information 6
 title 6
 folder names 31
 folder title tags 58
 frames 38, 39

- G -

gallery
 navigation 40
 gallery style 38
 options 39
 getting started 1

grayscale 63

- H -

How to

Add titles to your images 87

Create galleries of web pages 87

HTML

custom 43

document encoding 76

page properties 43

XHTML 76

HTML tag definitions 70

HTML templates 68

advanced 69

simple 69

tag definitions 70

- I -

Image Explorer 3

keyboard shortcuts 24

options 16

image overlay effect 67

image pages

advanced options 52

banners 43

colors 43

custom HTML 43

options 51

image title tags 58

image viewer

keyboard shortcuts 26

images

advanced options 37

borders 66

database 20

disable right-clicking 45

drag and drop 7

effects 63

email 10

EXIF image information 10

file format 80

filters 81

grayscale 63

Image Explorer 3

image overlay effect 67

information 5

IPTC image information 11

JPEG 80

JPEG comment 13

logo 65

masks 68

options 36

PNG 80

resampling 81

resize 36, 81

rotate 4

select 5

sepia 63

slideshow 51

sort 5

text label 36

text labels 64

thumbnails 34

titles 5

view 3

watermark (logo) 65

watermark (text) 64

index page

advanced options 45

banners 43

borders 47

colors 43

custom HTML 43

options 38

RSS feeds 44

table cell options 48

thumbnail layout options 48

Internet Explorer security warning 80

IPTC image information 11

IPTC window

keyboard shortcuts 27

- J -

JPEG 80

JPEG comment 13

jpeg comment window

keyboard shortcuts 28

- K -

keyboard shortcuts

keyboard shortcuts
 Image Explorer 24
 image viewer 26
 IPTC image information window 27
 jpeg comment window 28

- L -

link
 Arles website 76
 load
 style 82
 location
 database 24
 logging 79
 logo 65

- M -

masks 68
 Movies
 create gallery with movies 54
 play 14
 select poster frame 15
 view 14
 multi-folder processing 85

- N -

navigation 40

- O -

options
 advanced files 30
 advanced image 37
 advanced image pages 52
 advanced index page 38, 45
 advanced thumbnail 34
 advanced title 56
 email 19
 environment 75
 gallery style 39
 image and thumbnail effects 63
 Image Explorer 16
 image pages 51
 images 36

index page 38
 slideshow 51
 thumbnails 34
 titles 55
 ordering information 2

- P -

play movies 14
 PNG 80
 popups 49
 poster Frame
 movie 15
 print services 50
 protection
 images 52
 thumbnails 45
 publish
 files 59
 location options 61
 options 62

- Q -

quick start 1

- R -

register 2
 rename files 9
 resample
 images 81
 resize
 images 36, 52
 restore database 22
 rotate images 4
 RSS 44
 run options 83

- S -

save
 style 82
 security warning
 Internet Explorer 80
 sepia 63
 server

- server
 - upload 59
- shortcuts
 - Image Explorer 24
 - image viewer 26
 - IPTC image information window 27
 - jpeg comment window 28
- simple HTML templates 69
- slideshow 51
- sort images 5
- source folder 29
- style files 82
- subcategories 85
- subfolders 31

- T -

- tags
 - HTML Template 70
 - title tags (folder) 58
 - title tags (images) 58
- target folder 29
- templates
 - example 75
 - HTML 68
 - using 68
- text label
 - images 36
- text labels
 - images 64
- thumbnail
 - HTML border 48
 - layout options 48
- thumbnail table options 46
- thumbnails
 - advanced options 34
 - borders 66
 - crop to fit 36
 - effects 63
 - grayscale 63
 - image overlay effect 67
 - links 48
 - logo 65
 - masks 68
 - options 34
 - sepia 63
 - text labels 64
 - watermark (logo) 65

- watermark (text) 64
- title
 - folder 6
- title options 55
- titles
 - advanced options 56
 - image 5

- U -

- upload 59
- user files 33

- V -

- view images 3

- W -

- warning
 - Internet Explorer 80
- watermark
 - logo 65
 - text 64

- X -

- XHTML 76